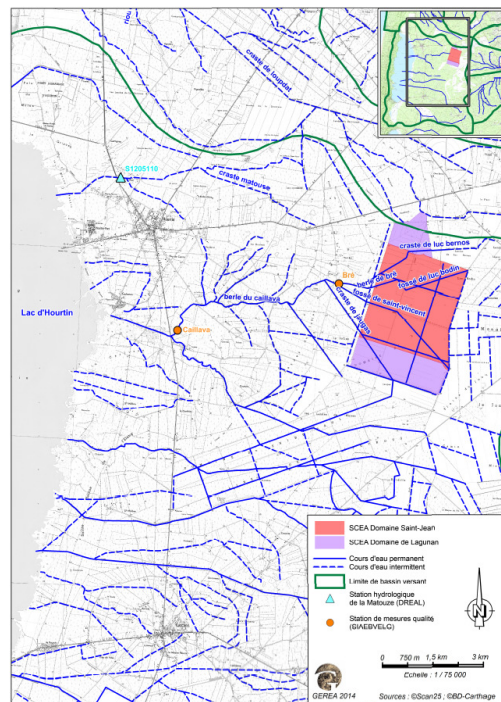


# Création de Zones Tampons Humides Artificielles en zone agricole

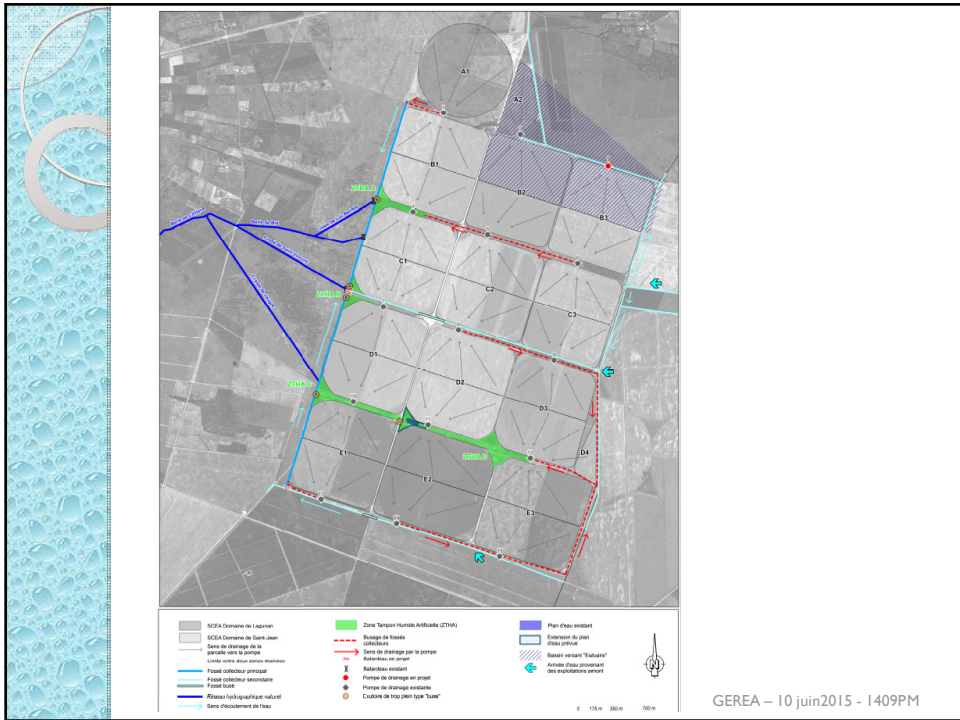
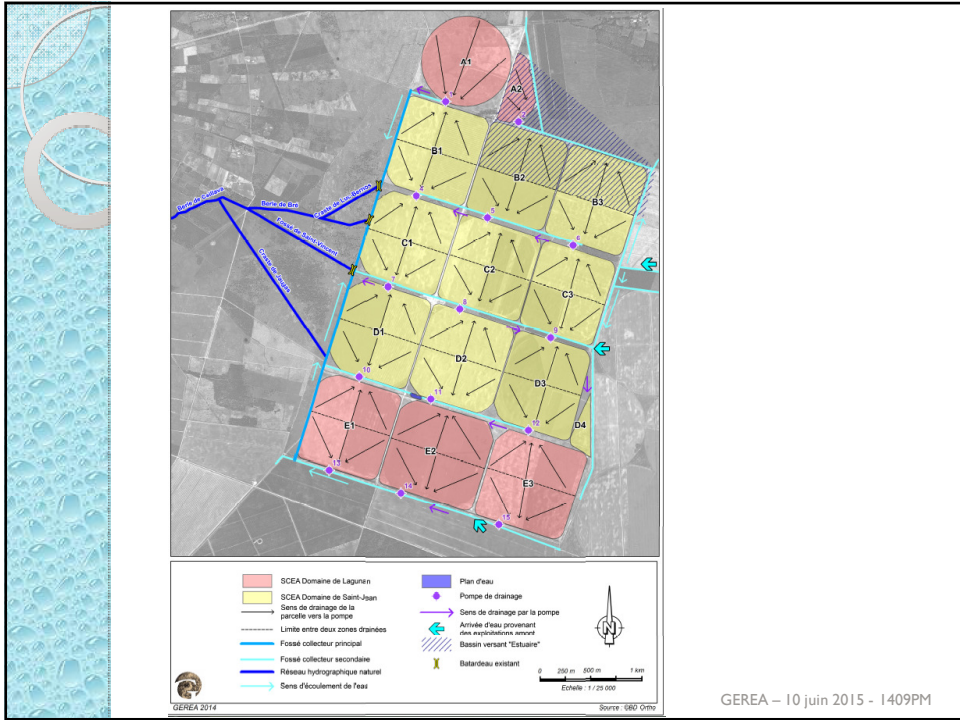
Maître d'ouvrage : SCEA du Domaine Saint Jean

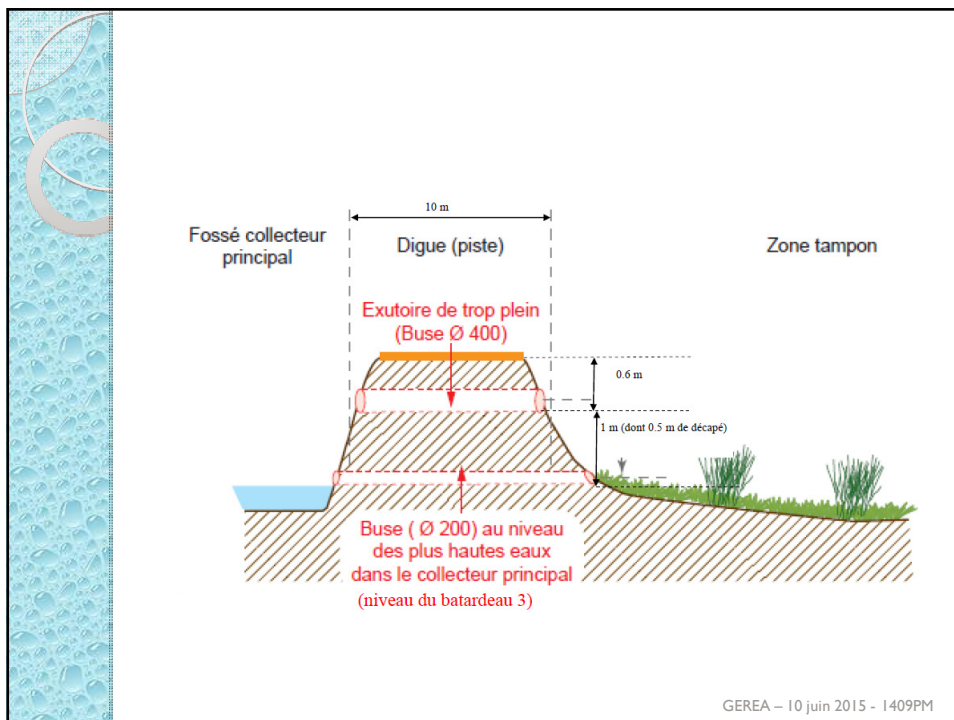
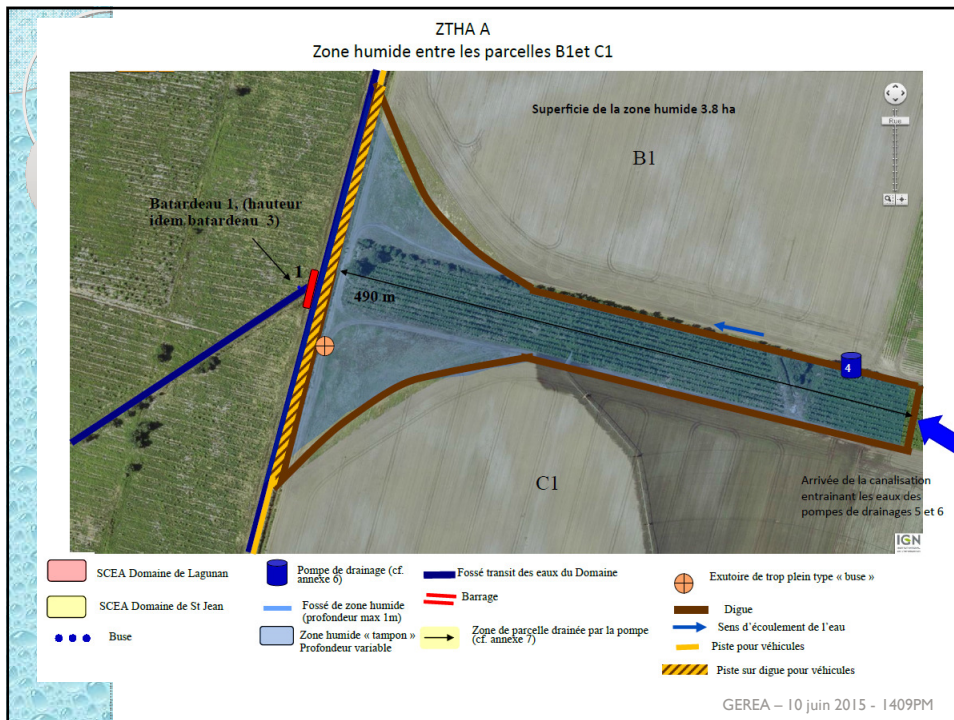


GEREA - 10 juin 2015 - 1409PM

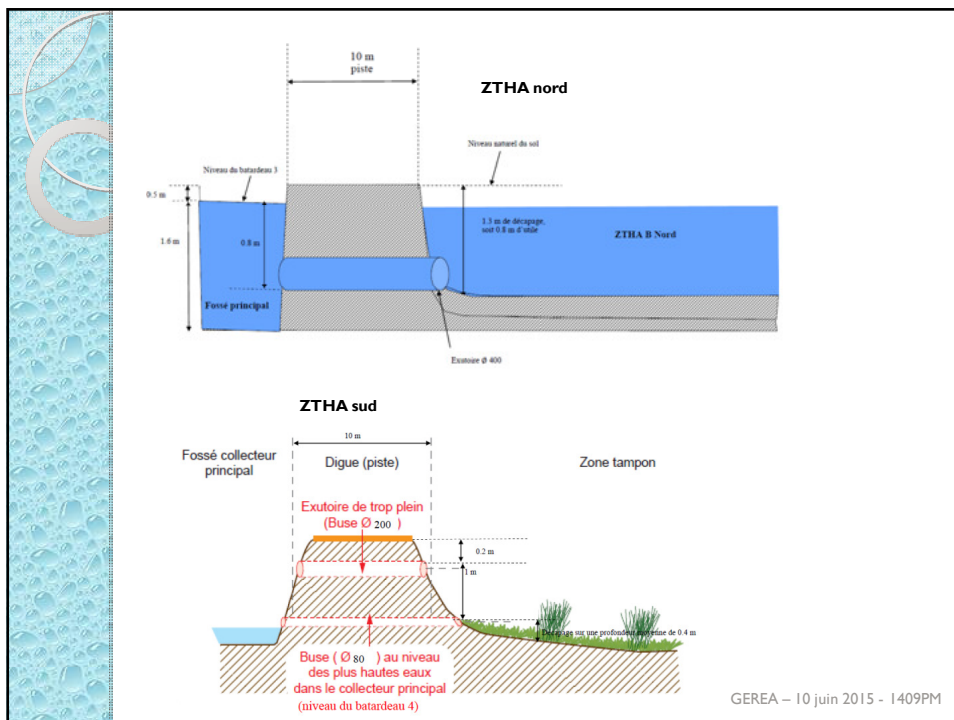
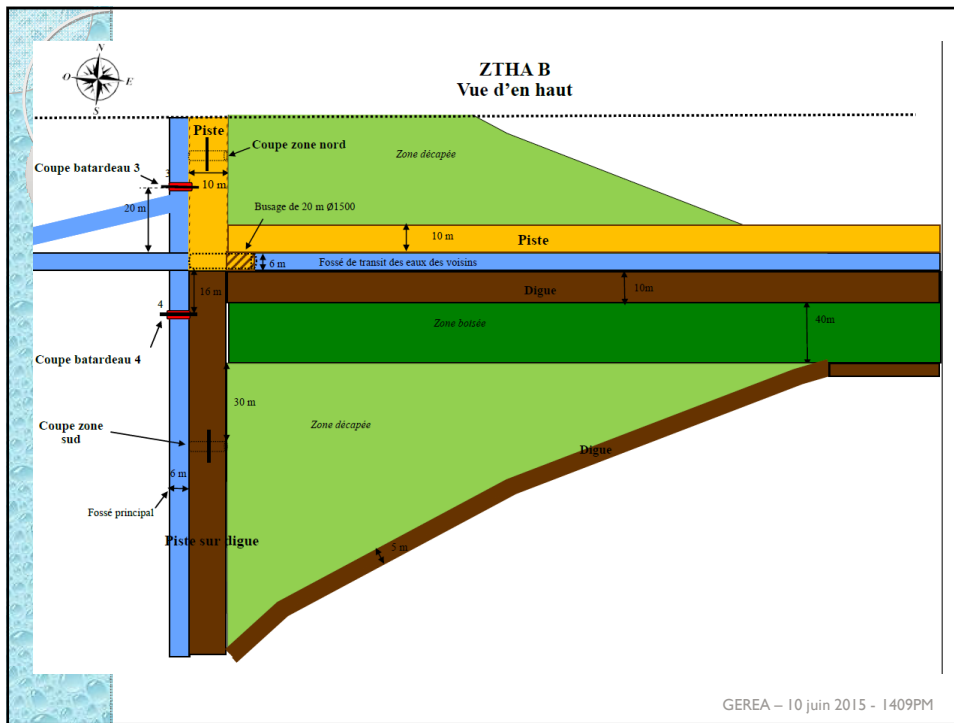


GEREA - 10 juin 2015 - 1409PM

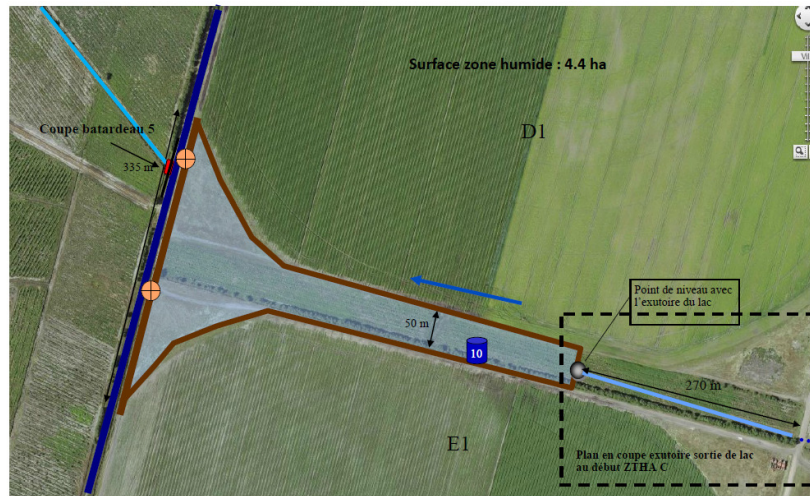






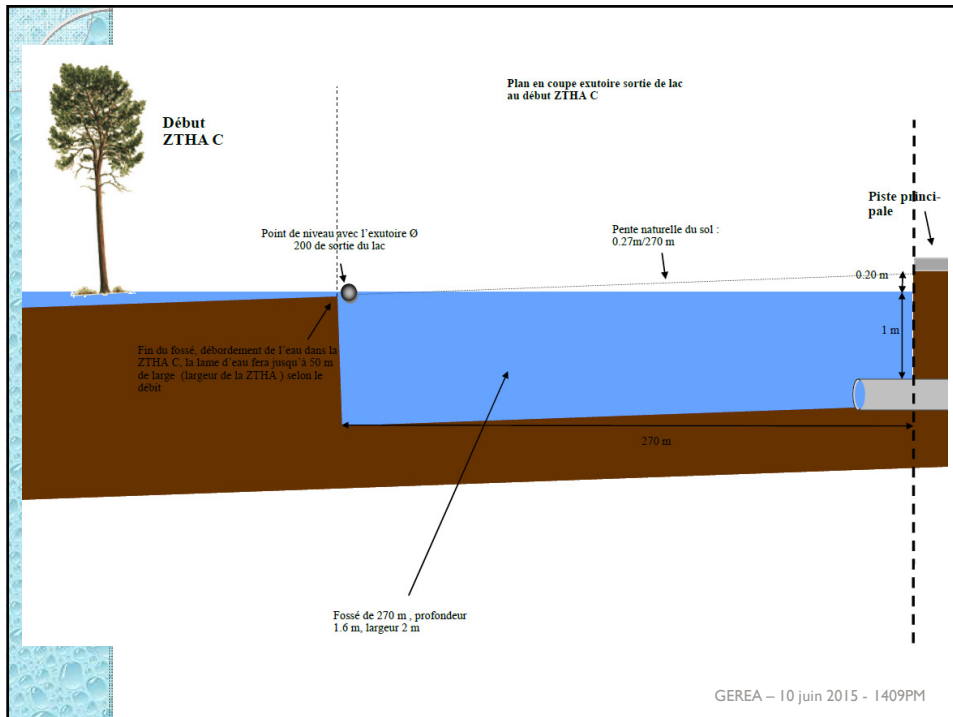


### ZTHA C

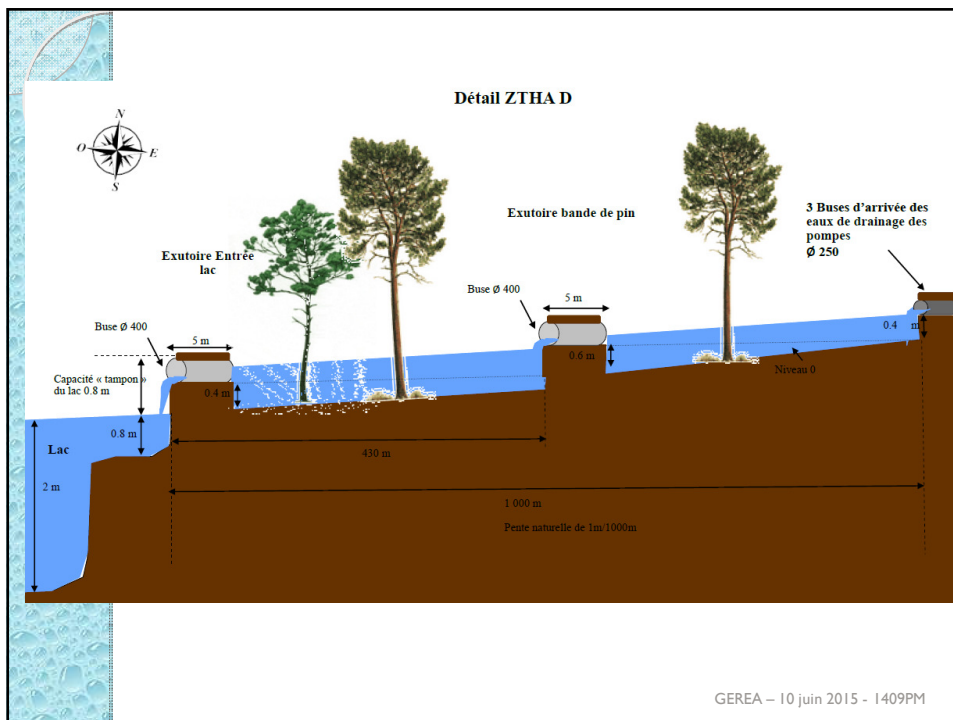
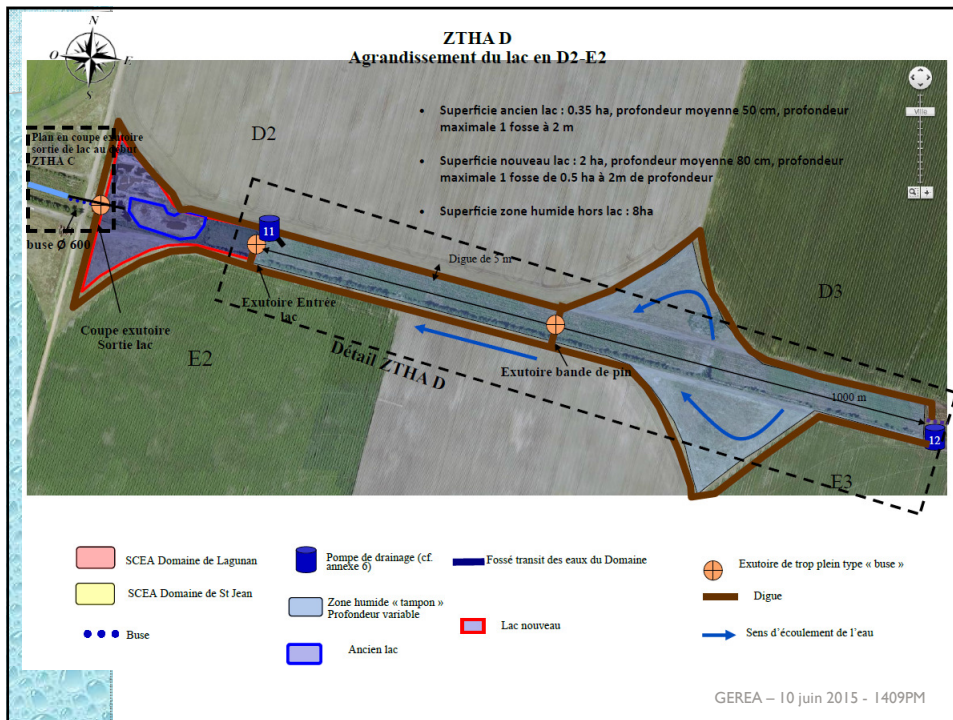


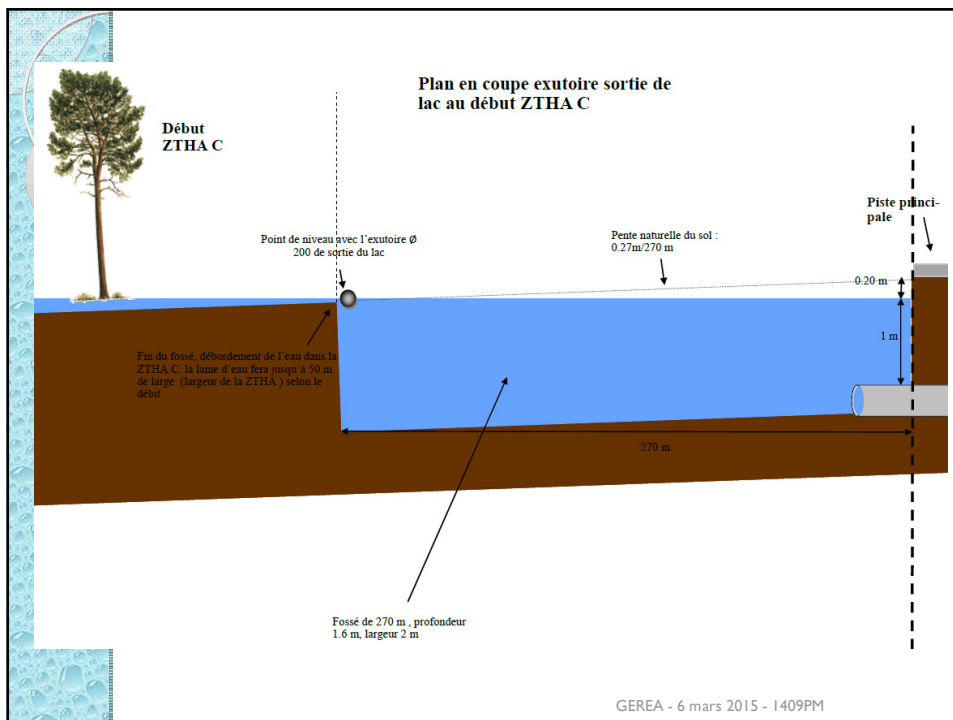
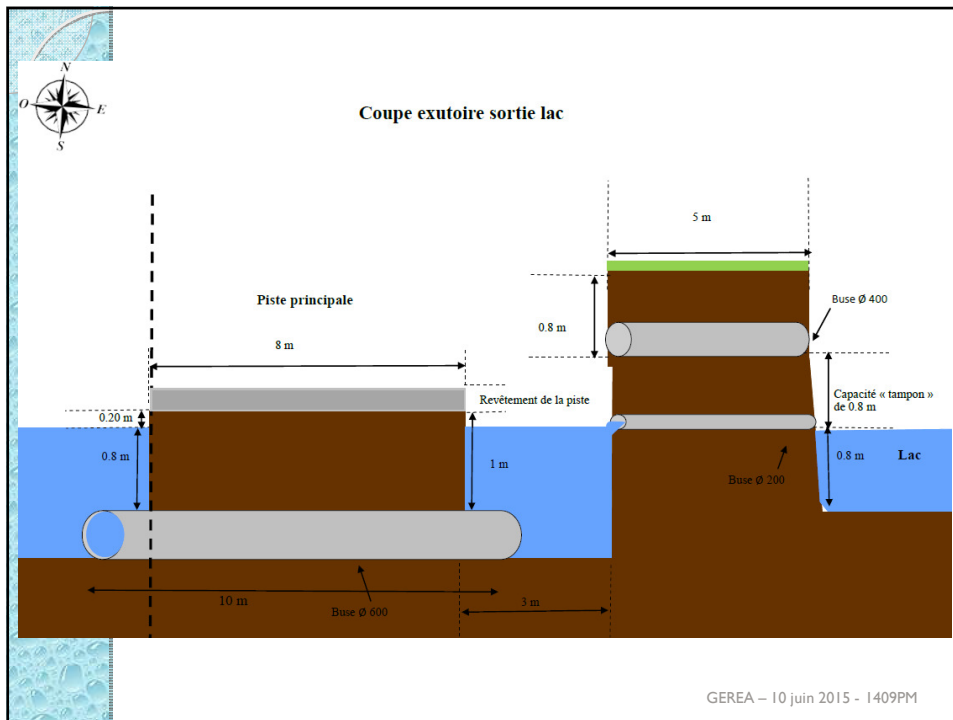
- |                         |                                            |                                    |                                      |
|-------------------------|--------------------------------------------|------------------------------------|--------------------------------------|
| SCEA Domaine de Lagunan | Pompe de drainage (cf. annexe 6)           | Fossé transit des eaux du Domaine  | Exutoire de trop plein type « buse » |
| SCEA Domaine de St Jean | Fossé de zone humide (profondeur max 1m)   | Autre fossé secondaire de drainage | Digue                                |
| Buse                    | Zone humide « tampon » Profondeur variable | Batardeau                          | Sens d'écoulement de l'eau           |

GEREA – 10 juin 2015 - 1409PM



GEREA – 10 juin 2015 - 1409PM





Merci pour votre attention



**G É R É A**  
ingénieurs écologues

GEREA - 6 mars 2015 - 1409PM