
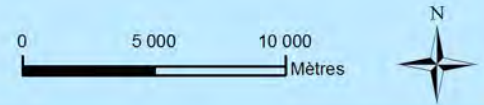


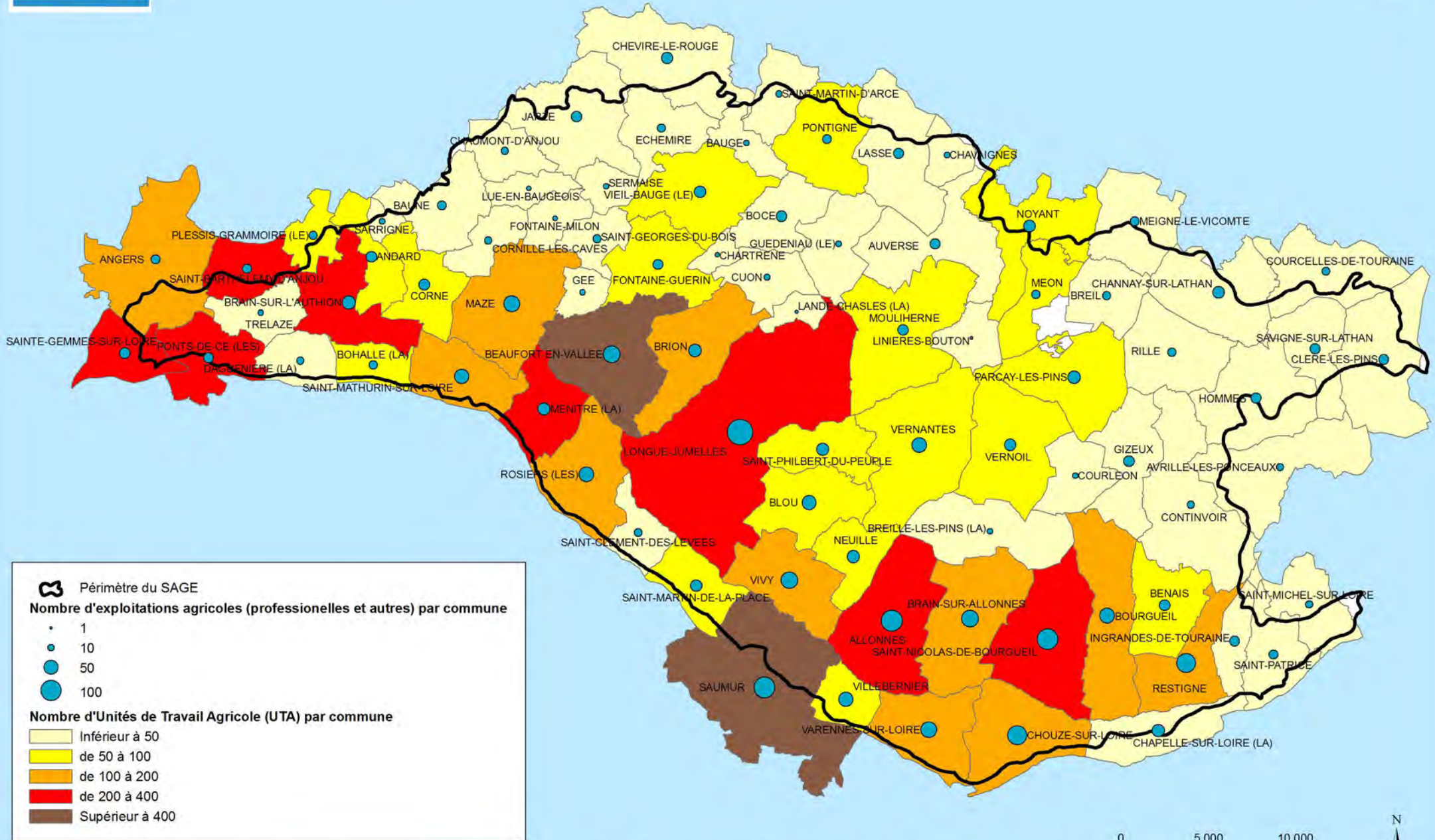
**NB: Commune de La Pellerine: secret statistique**

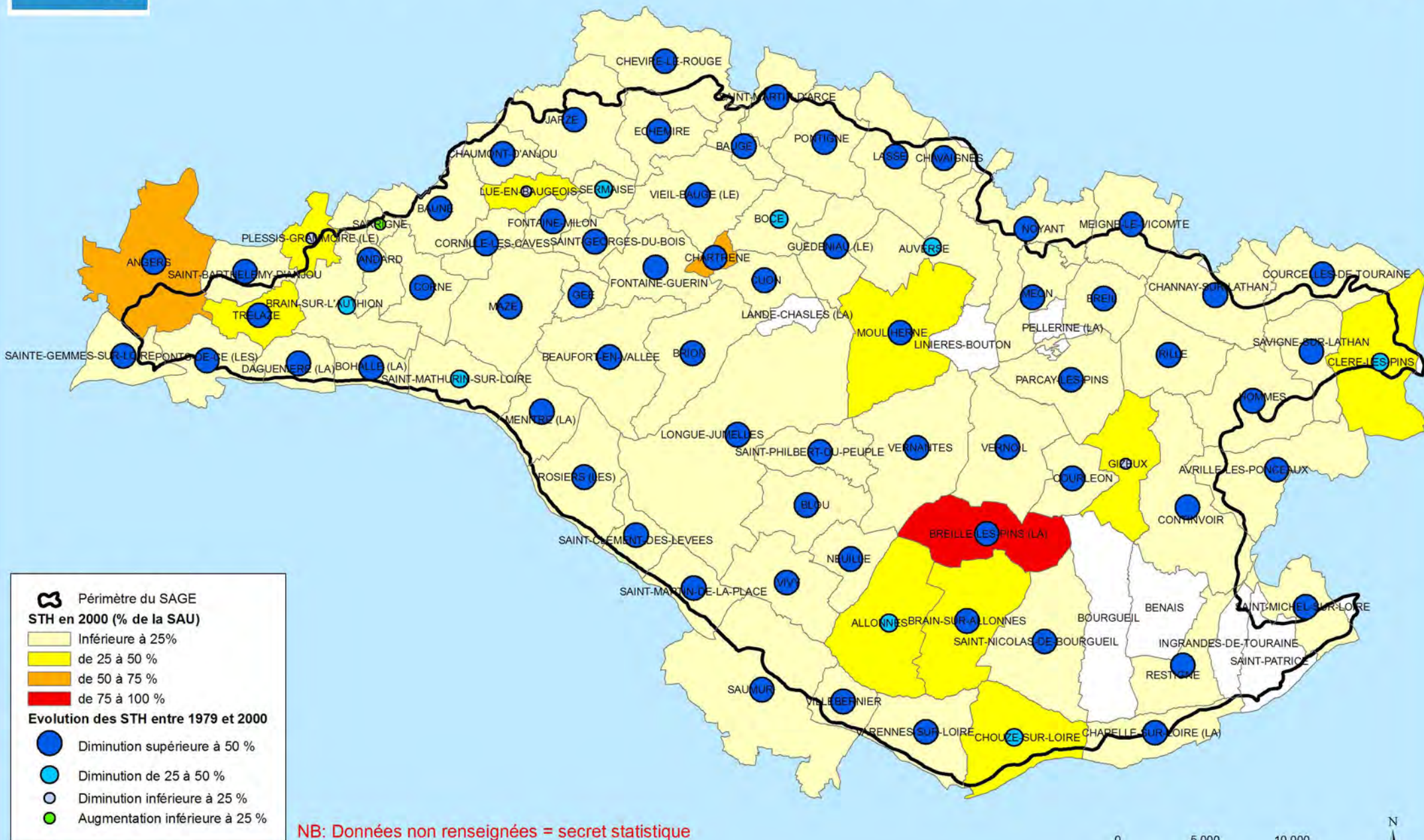
 Périètre du SAGE

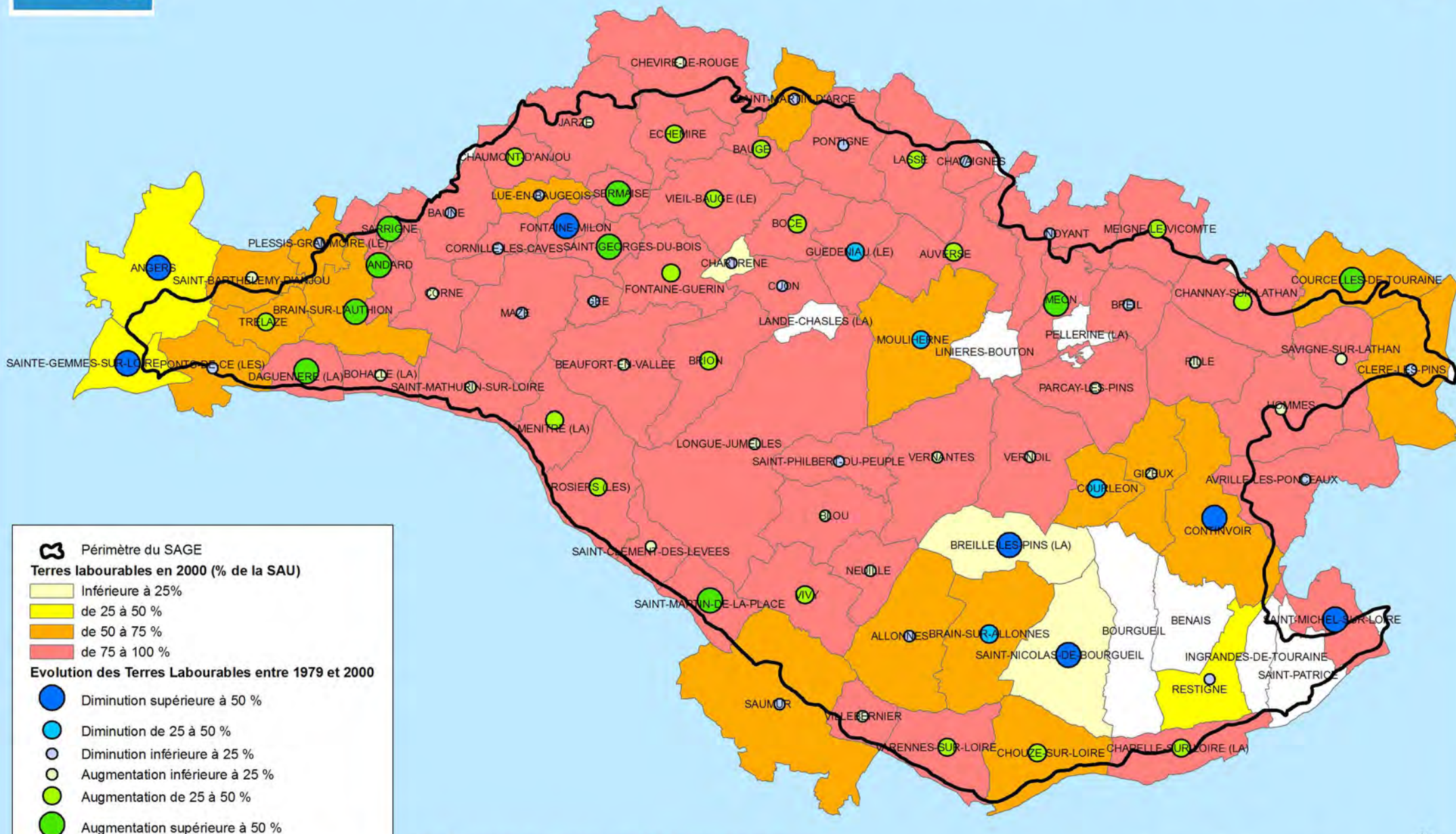
**Evolution de la SAU entre 1979 et 2000**

- De -65 à -90 %
- De -50 à -65 %
- De -30 à -50 %
- De -15 à -30 %
- Inférieure à -15 %
- de 0 à 50 %
- Supérieure à 50 %

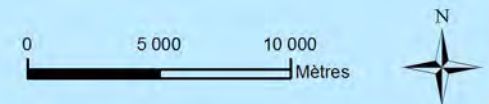


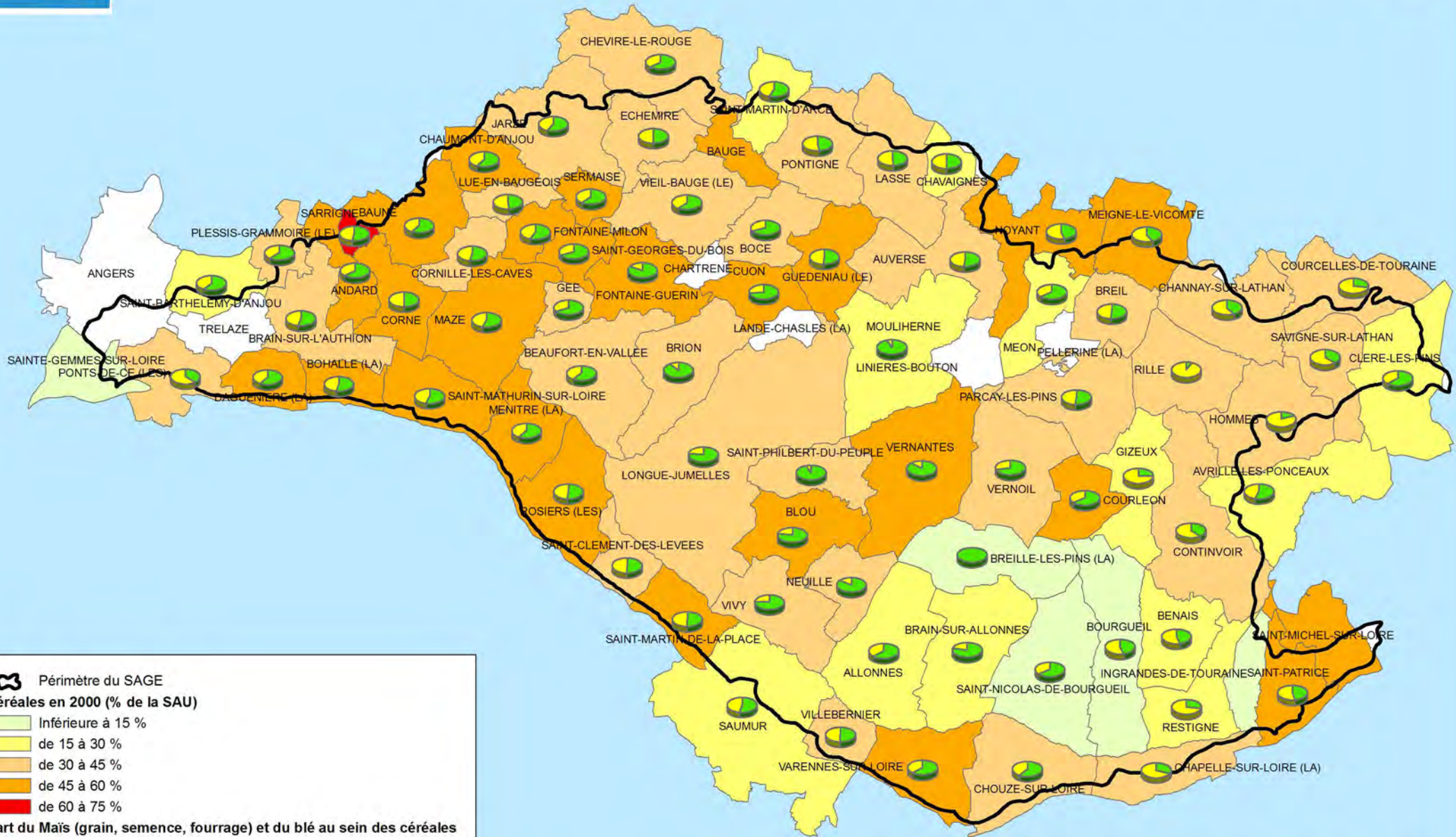




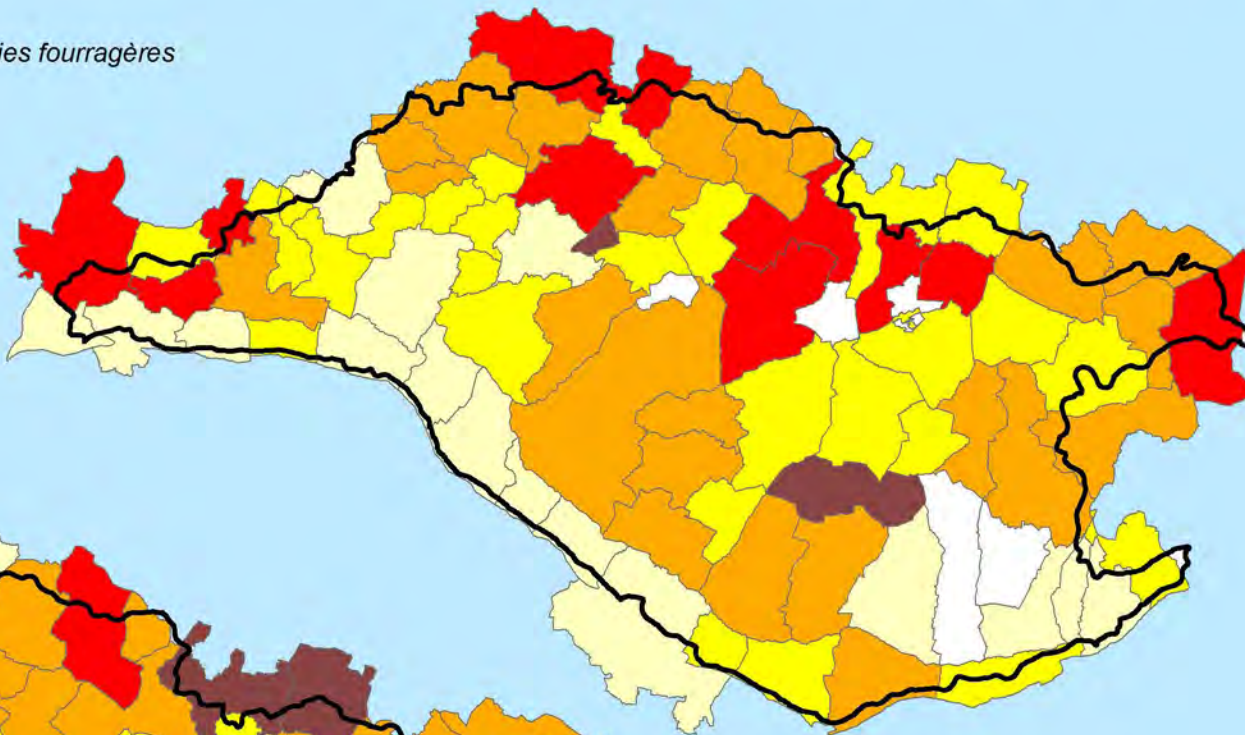


NB: Données non renseignées = secret statistique

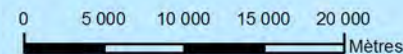
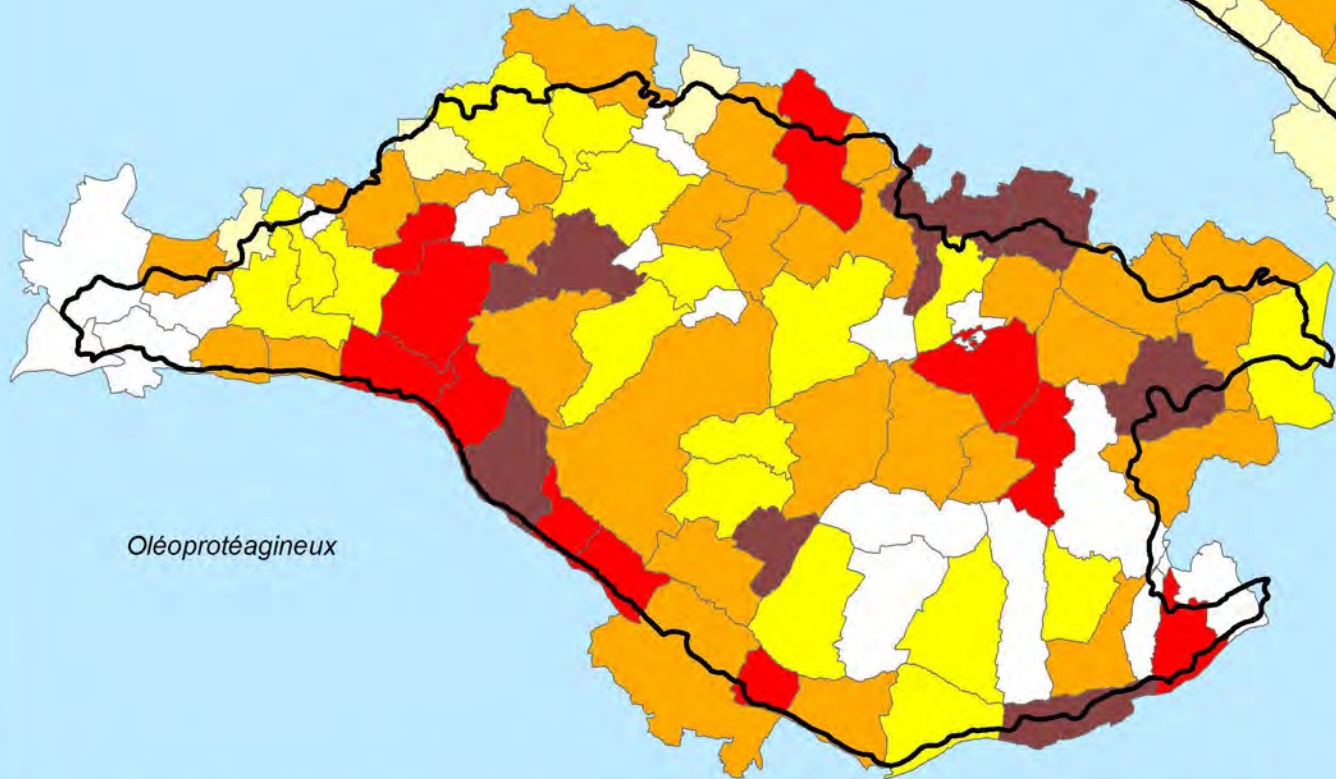
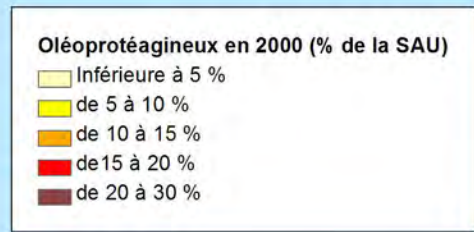




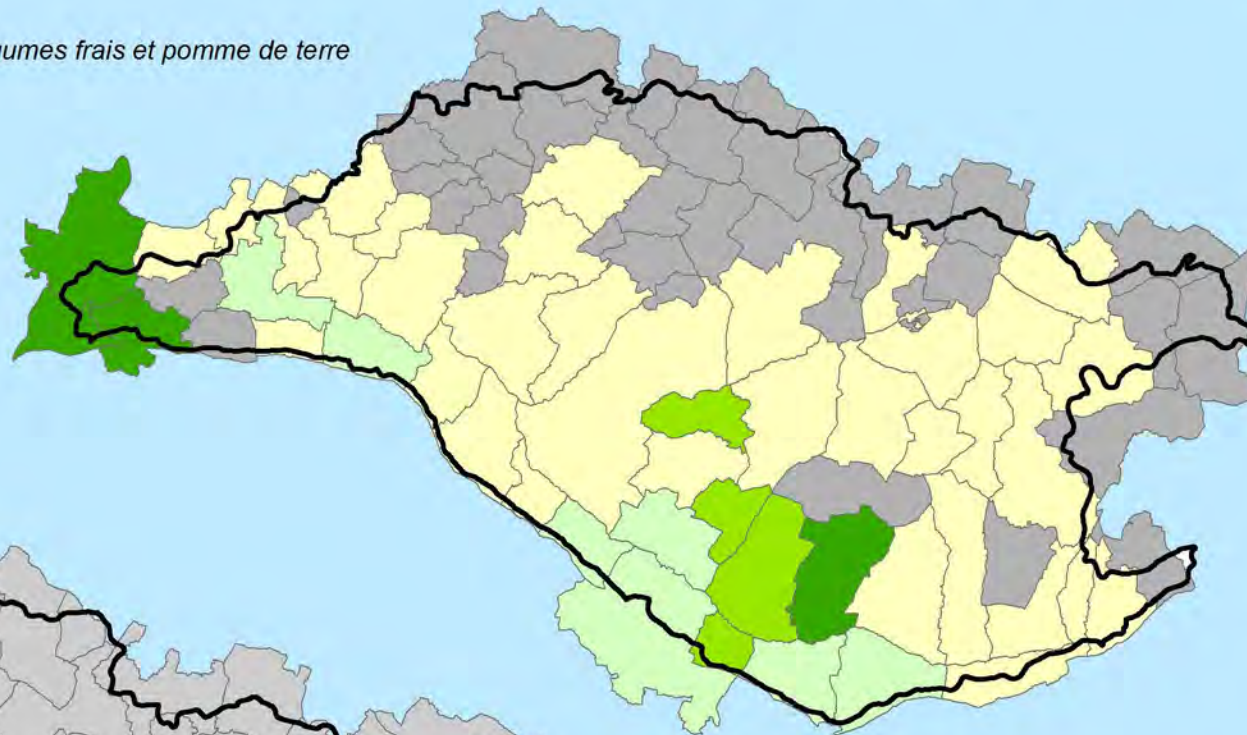
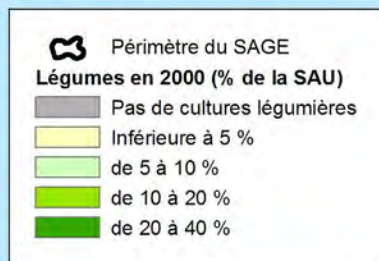
## Superficies fourragères



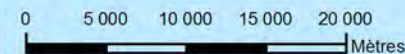
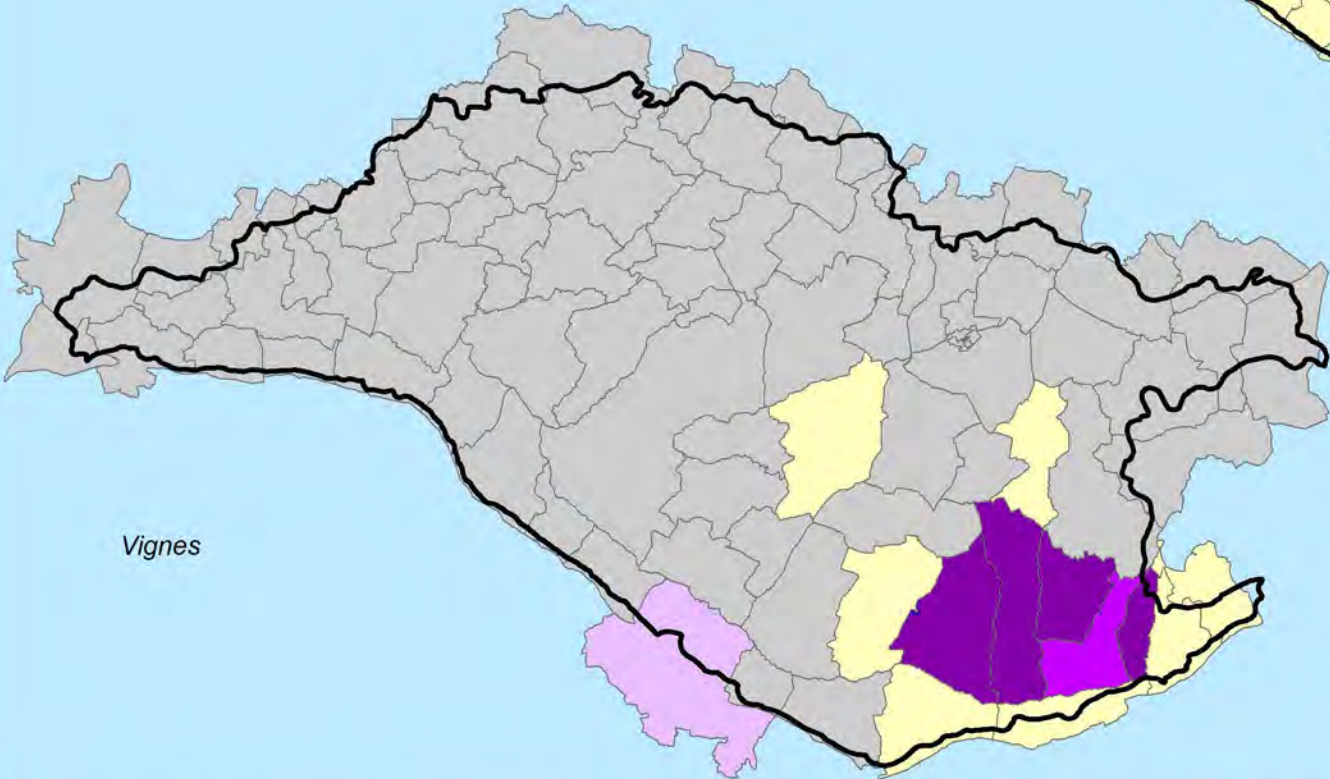
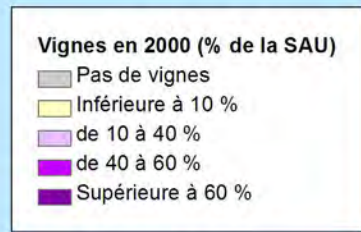
## Oléoprotéagineux



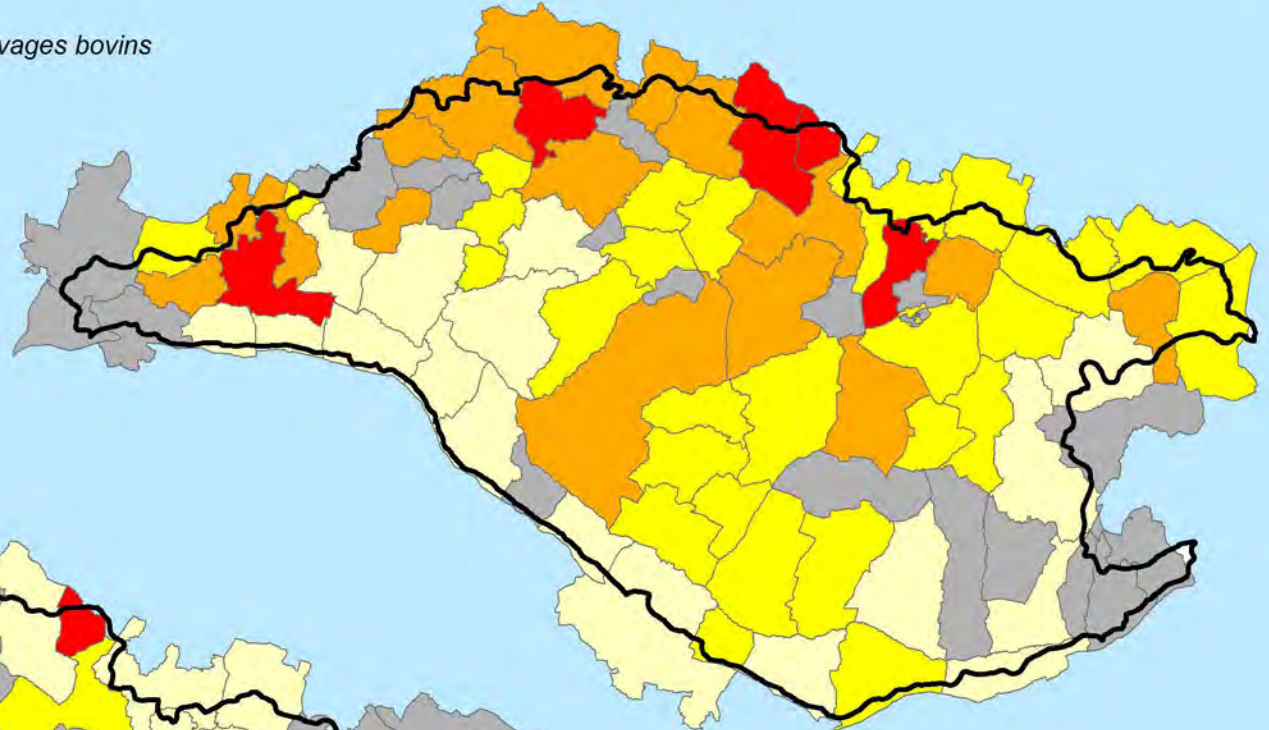
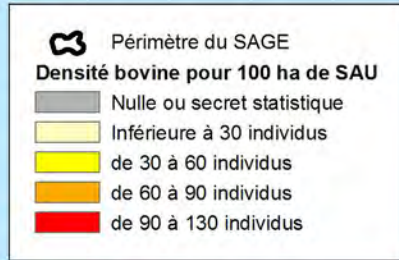
Légumes frais et pomme de terre



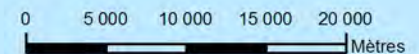
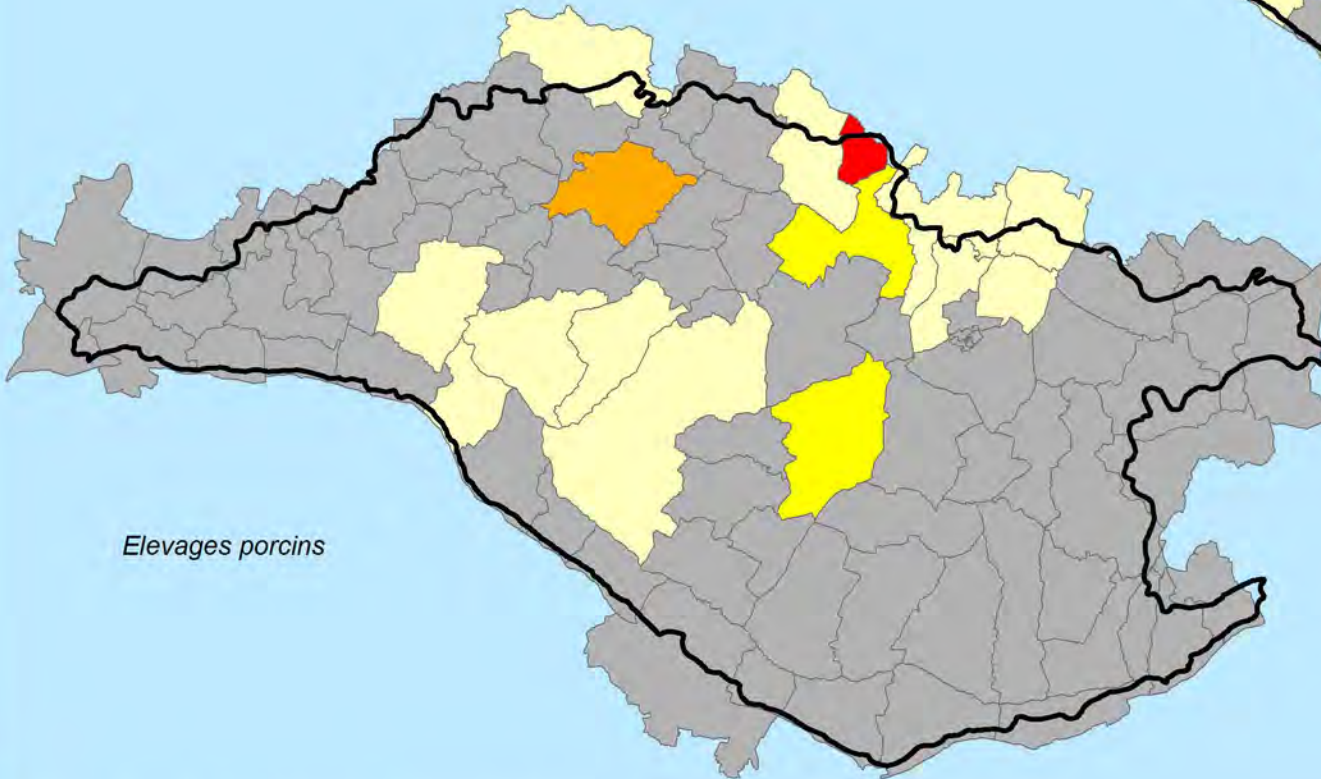
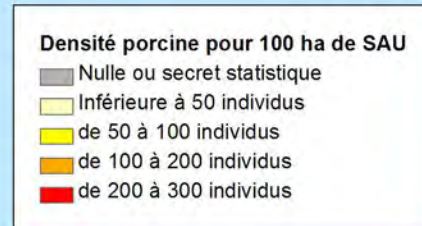
Vignes



## Elevages bovins

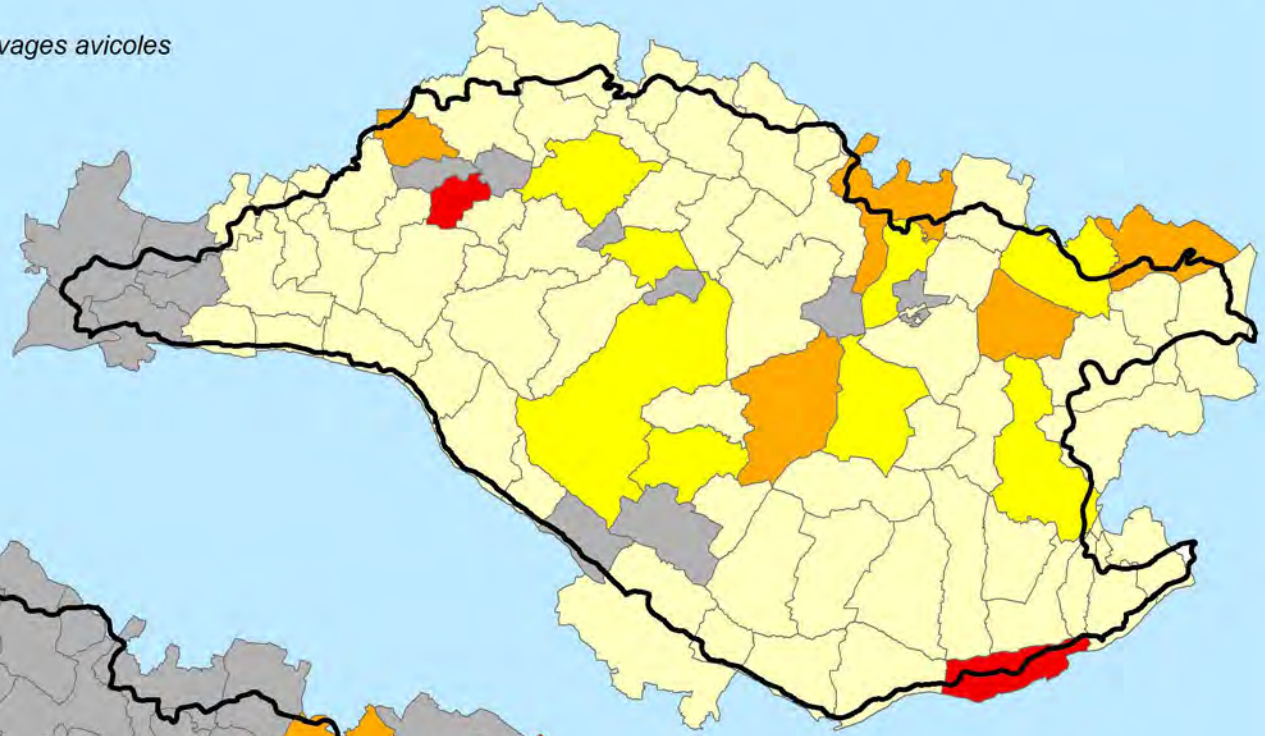
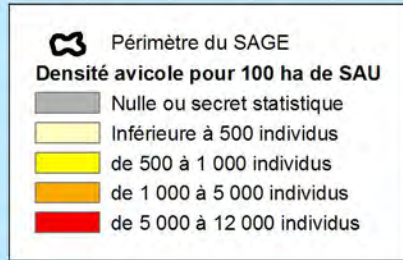


## Elevages porcins

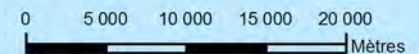
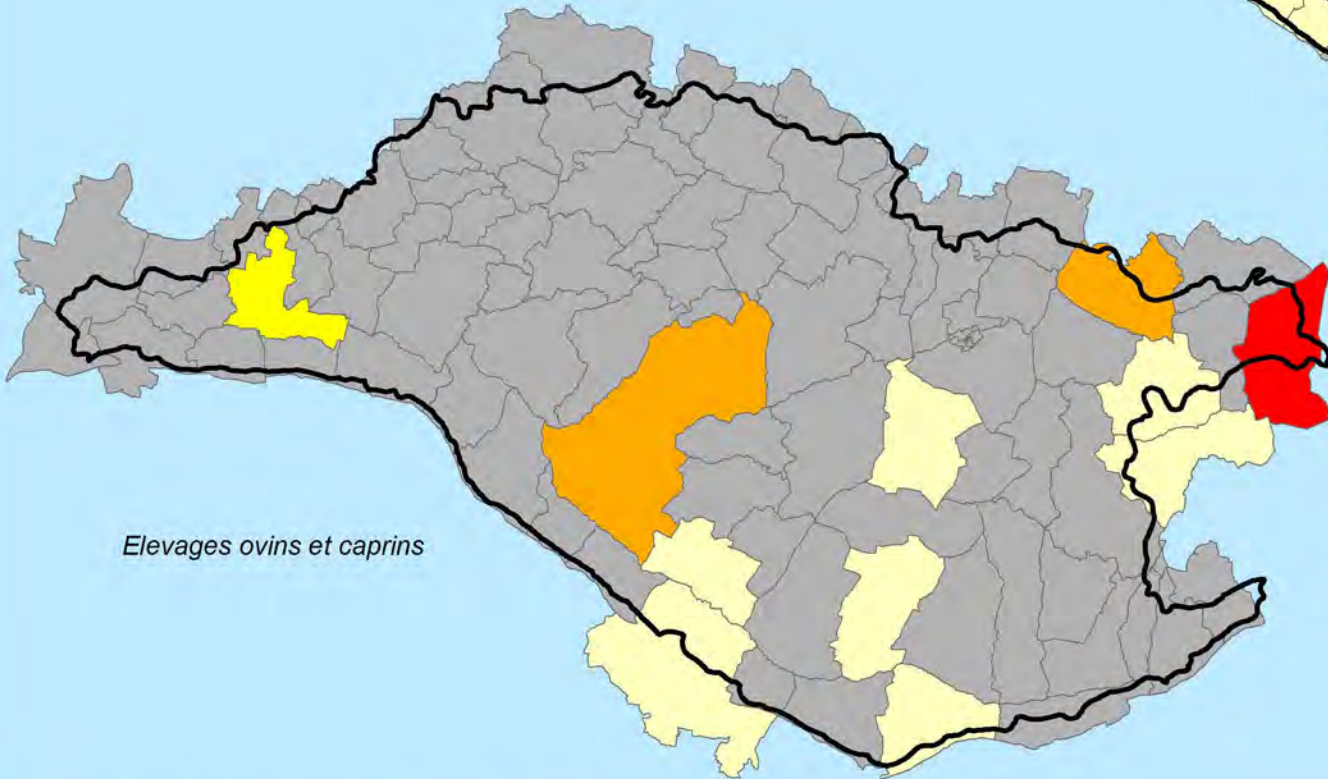
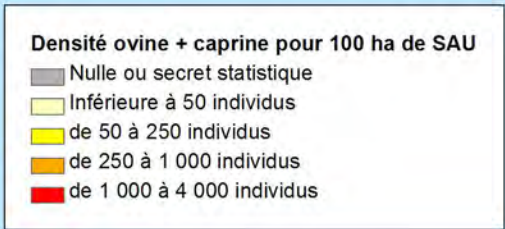


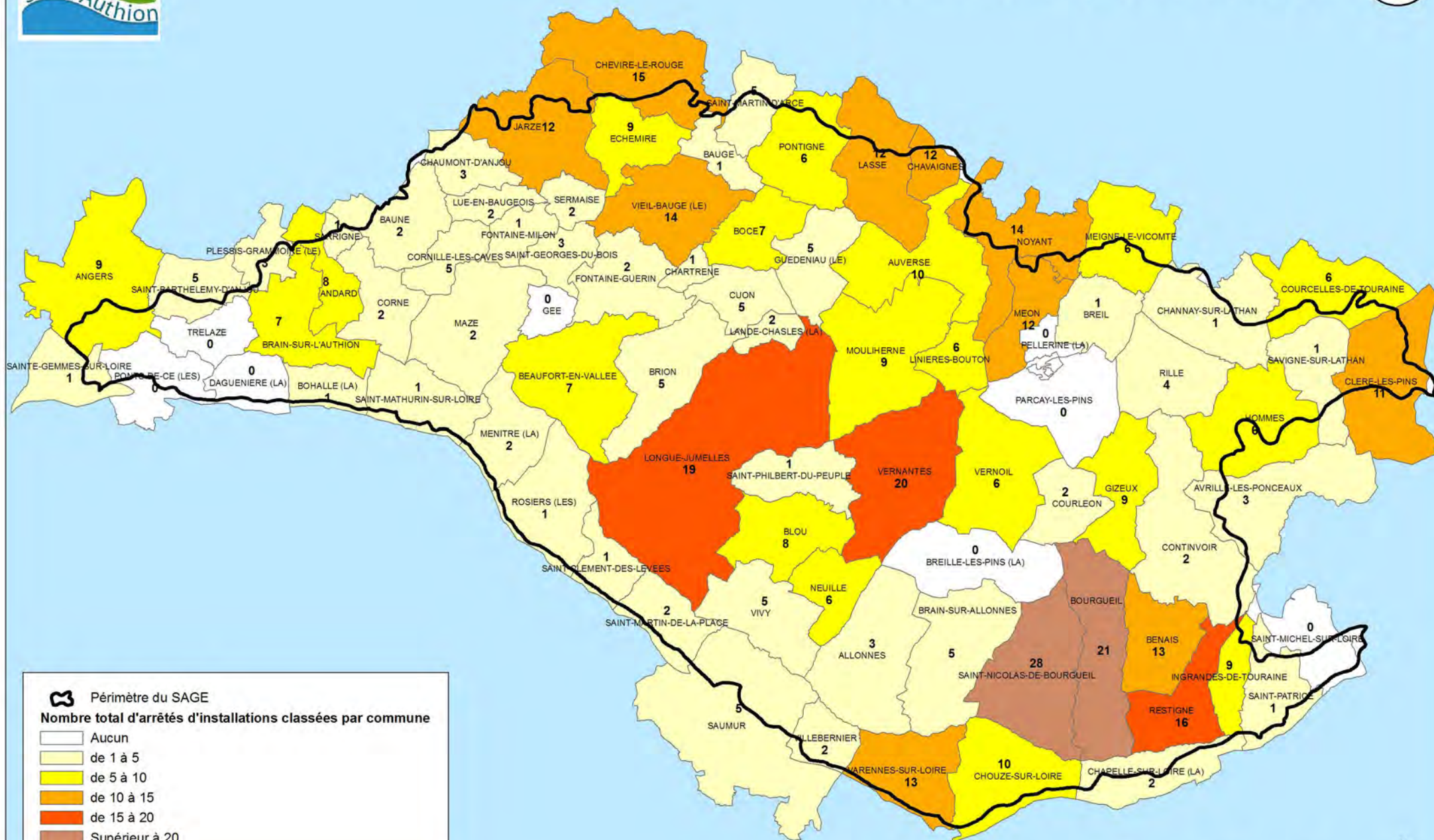


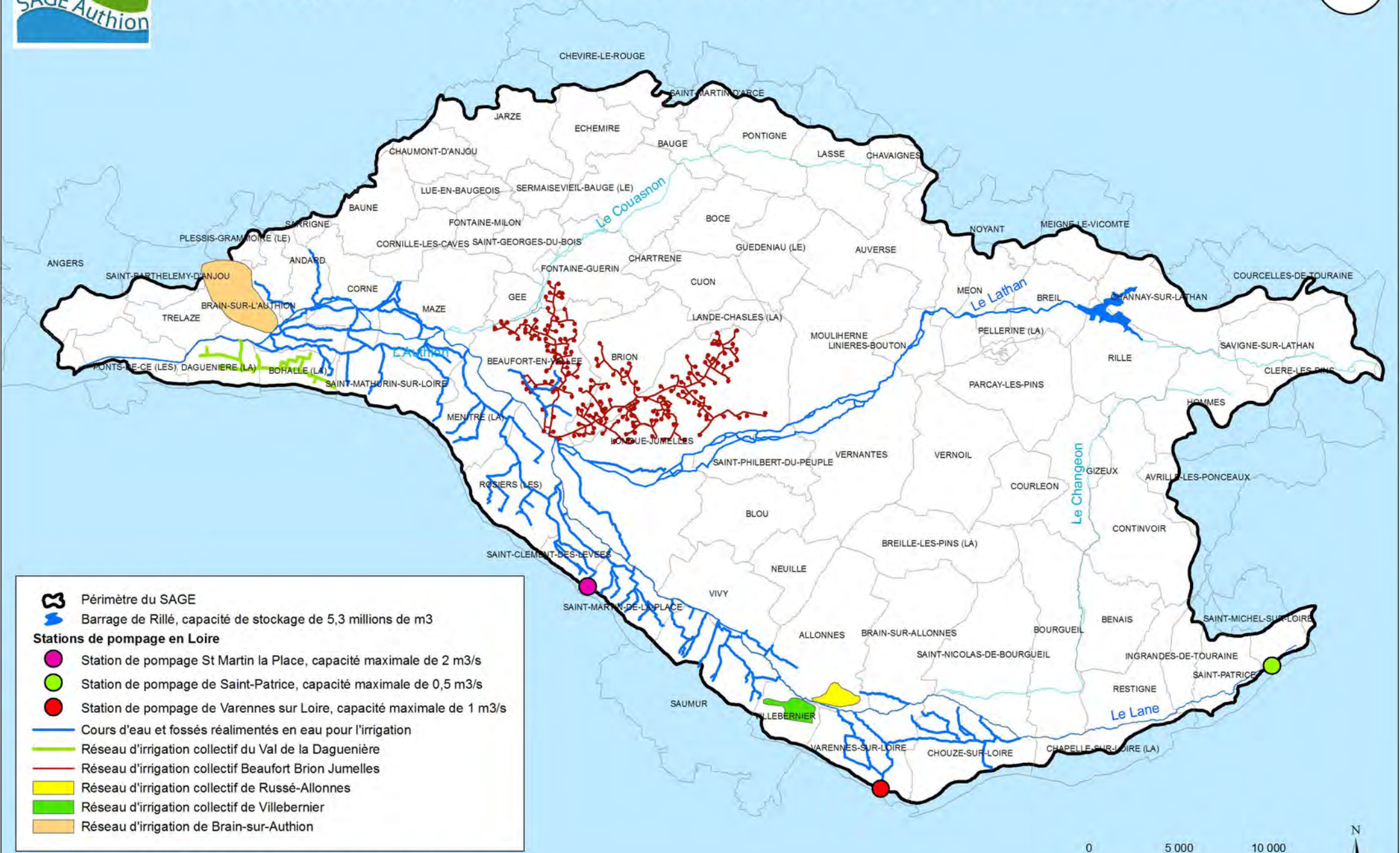
## Elevages avicoles



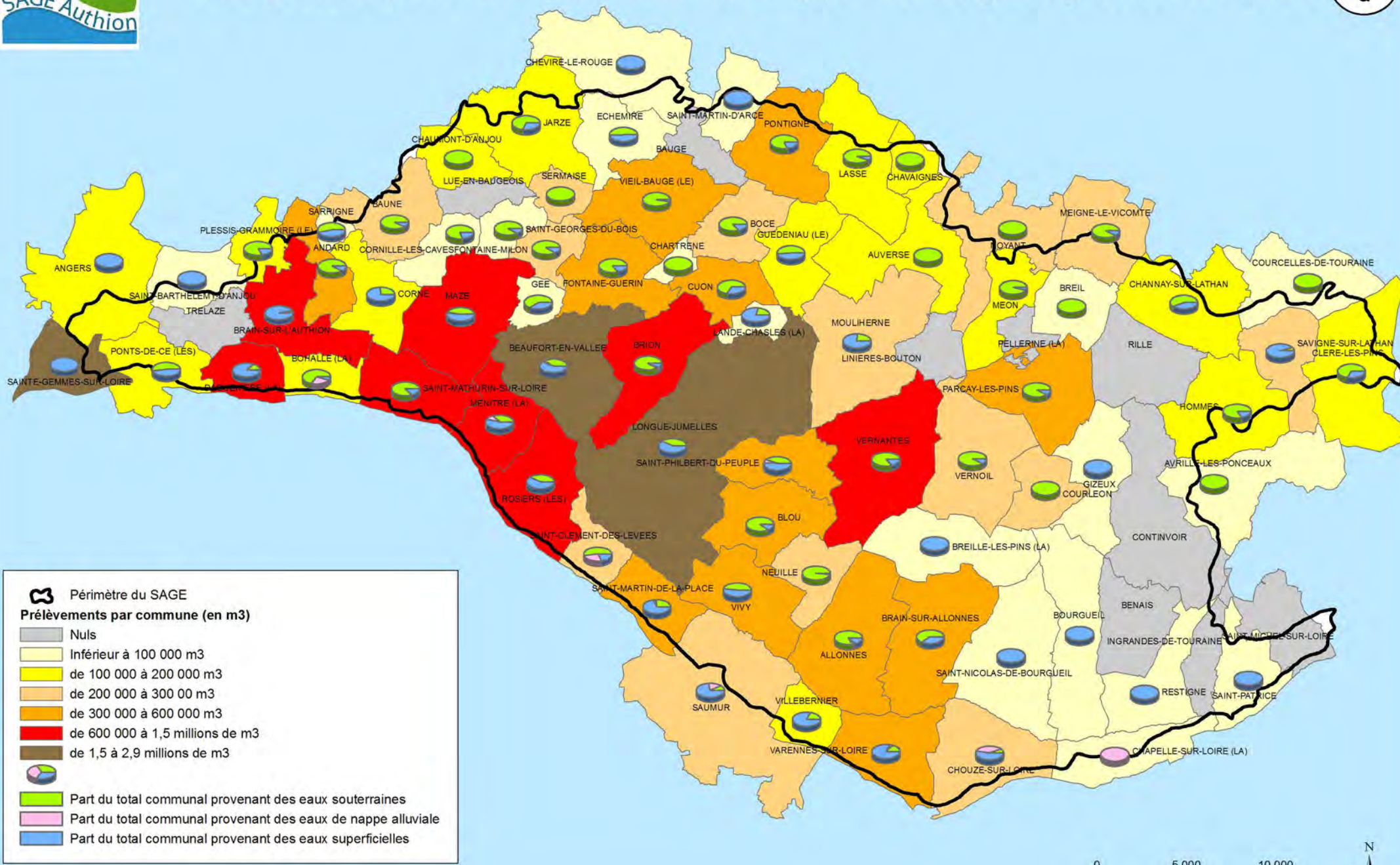
## Elevages ovins et caprins

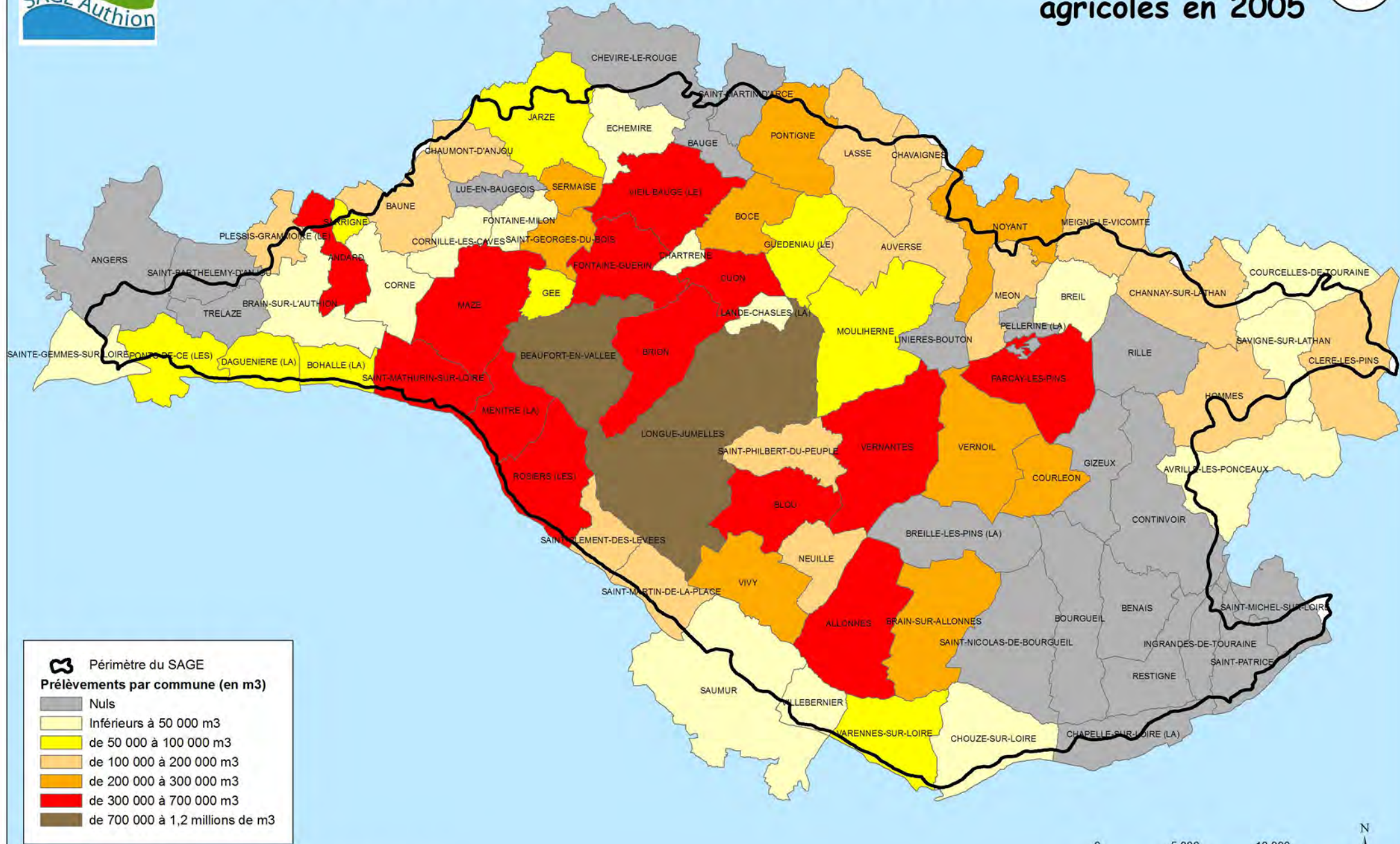




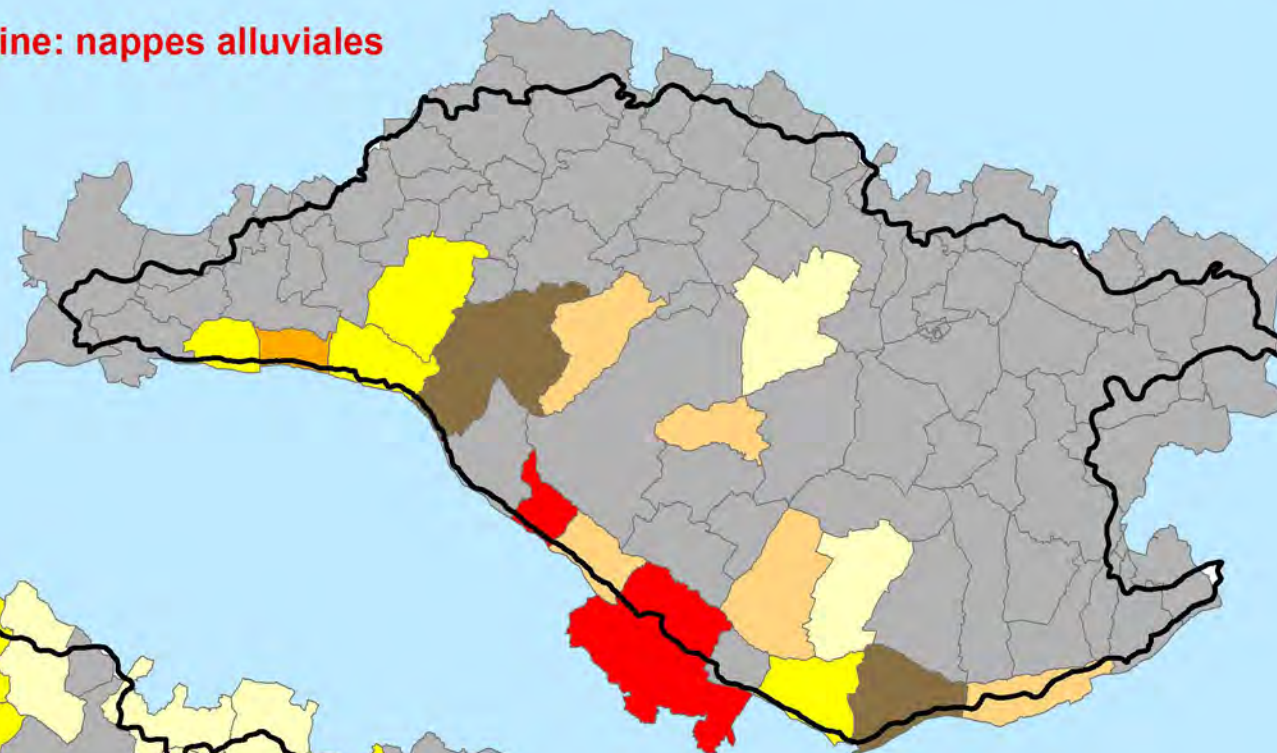
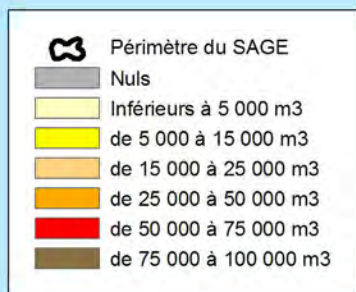


-  Périmètre du SAGE
-  Barrage de Rillé, capacité de stockage de 5,3 millions de m<sup>3</sup>
- Stations de pompage en Loire**
-  Station de pompage St Martin la Place, capacité maximale de 2 m<sup>3</sup>/s
-  Station de pompage de Saint-Patrice, capacité maximale de 0,5 m<sup>3</sup>/s
-  Station de pompage de Varennes sur Loire, capacité maximale de 1 m<sup>3</sup>/s
-  Cours d'eau et fossés réalimentés en eau pour l'irrigation
-  Réseau d'irrigation collectif du Val de la Daguenière
-  Réseau d'irrigation collectif Beaufort Brion Jumelles
-  Réseau d'irrigation collectif de Russé-Allonnes
-  Réseau d'irrigation collectif de Villebernier
-  Réseau d'irrigation de Brain-sur-Authion



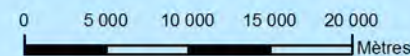
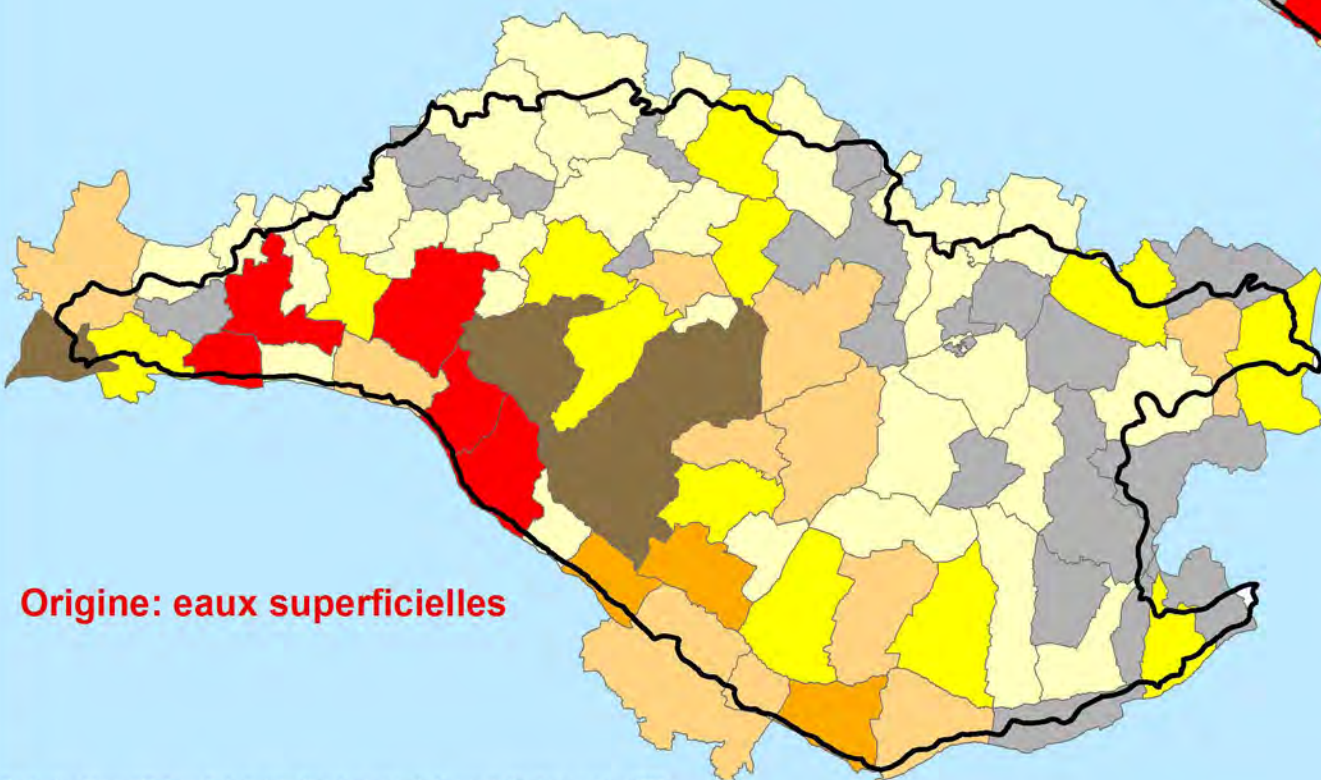
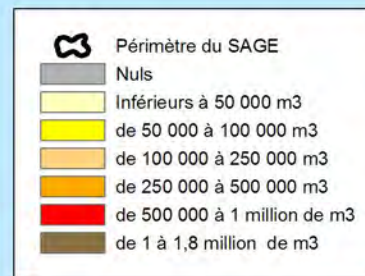


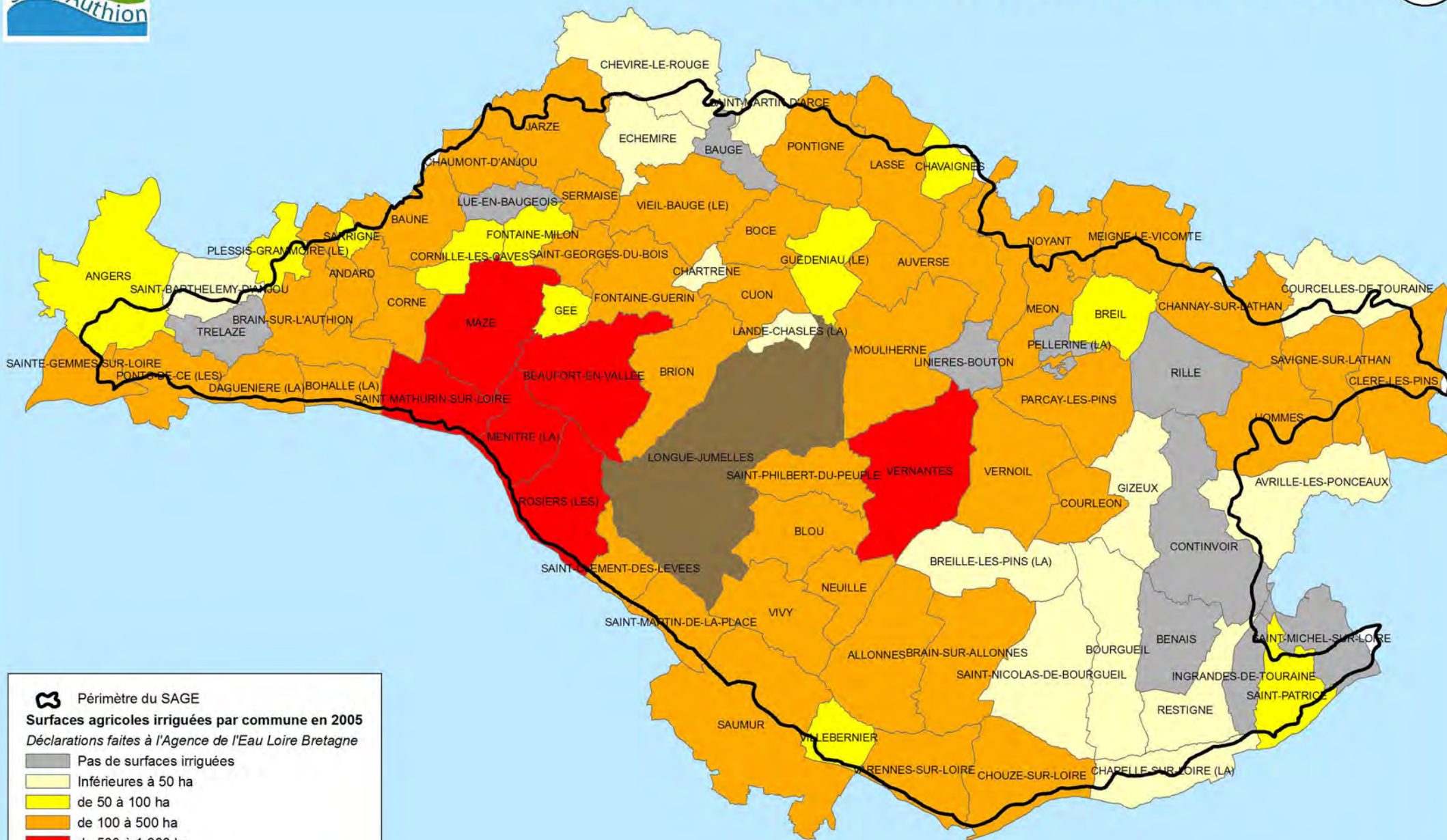
## Origine: nappes alluviales




NB: les modalités de l'Agence de l'Eau pour la différenciation nappes alluviales/ nappes souterraines peuvent conduire à des erreurs d'appréciation



## Origine: eaux superficielles

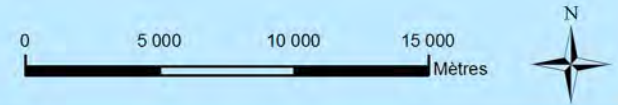


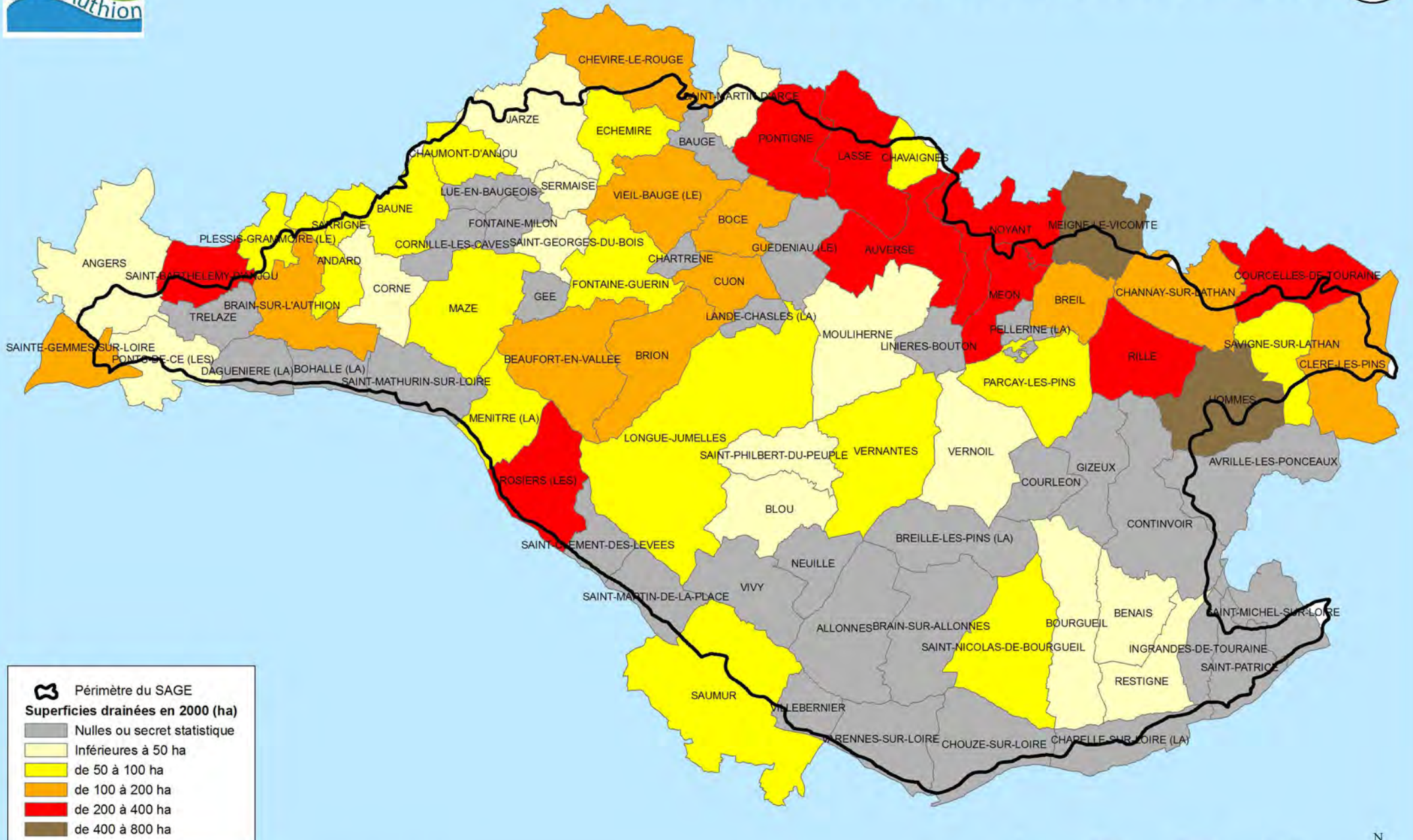


 Périmètre du SAGE

**Surfaces agricoles irriguées par commune en 2005**  
Déclarations faites à l'Agence de l'Eau Loire Bretagne

-  Pas de surfaces irriguées
-  Inférieures à 50 ha
-  de 50 à 100 ha
-  de 100 à 500 ha
-  de 500 à 1 000 ha
-  de 1 000 à 2 000 ha



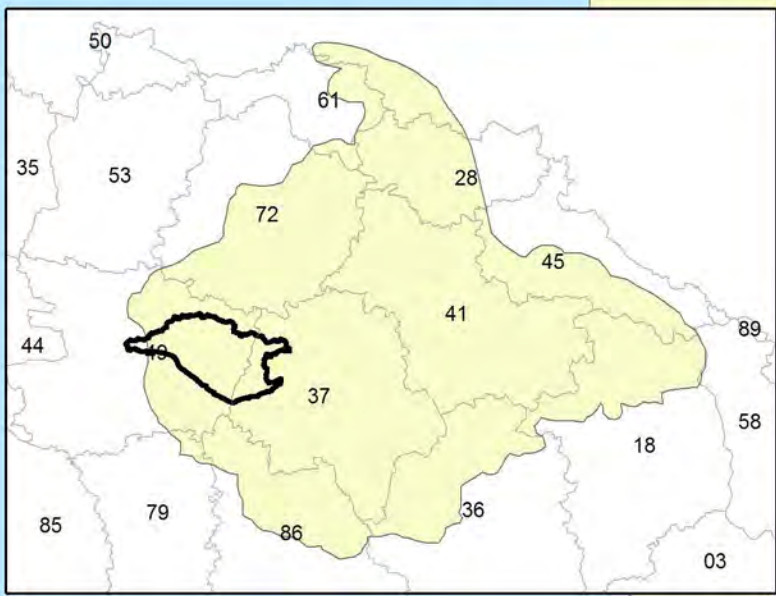
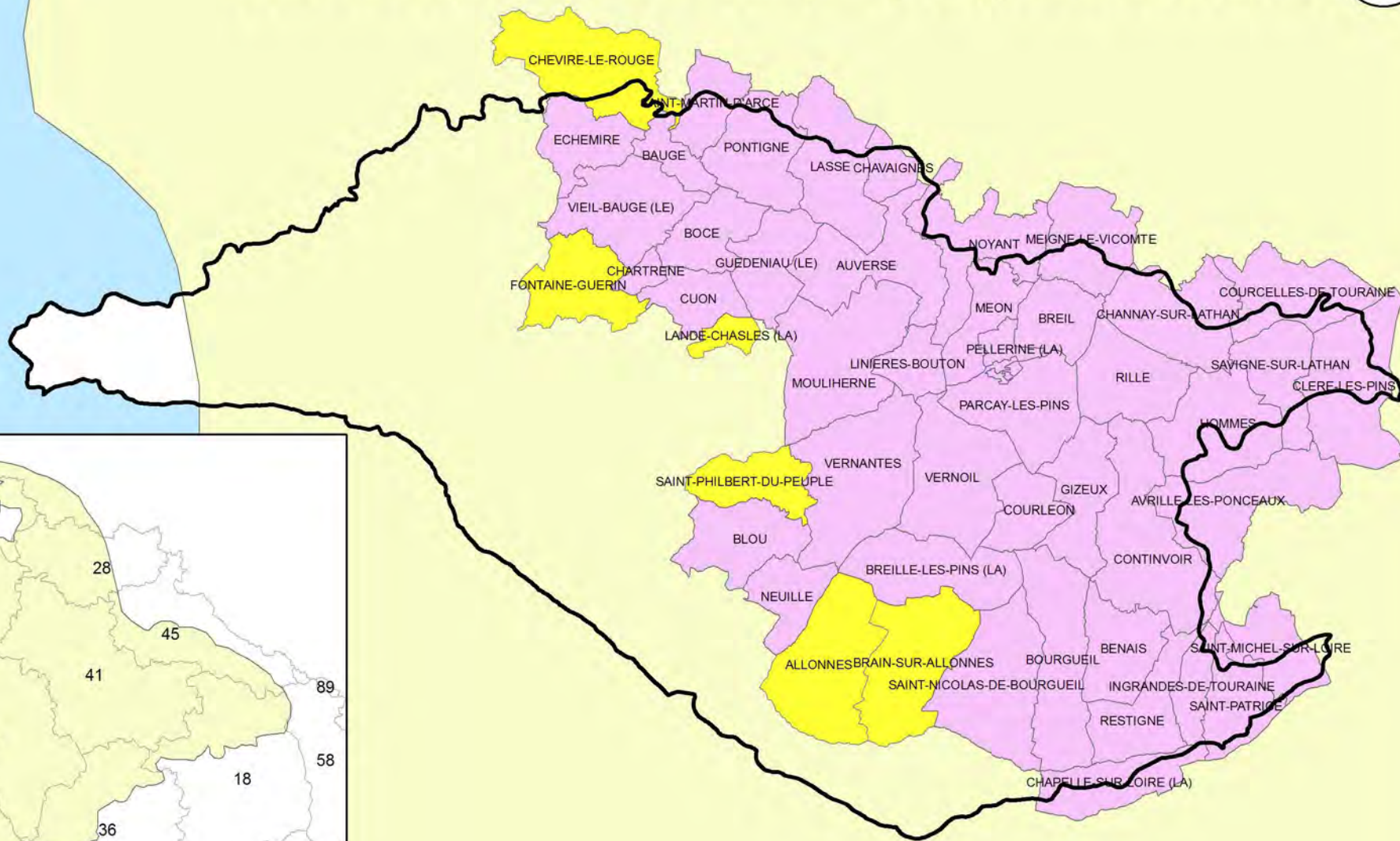










 Périmètre du SAGE  
 Communes classées en Zone Vulnérable (1994)





-  Périmètre du SAGE
-  Communes hors ZRE en suivi rapproché
-  Communes incluses dans la ZRE par arrêté préfectoral
-  ZRE Nappe du Cénomaniens

