



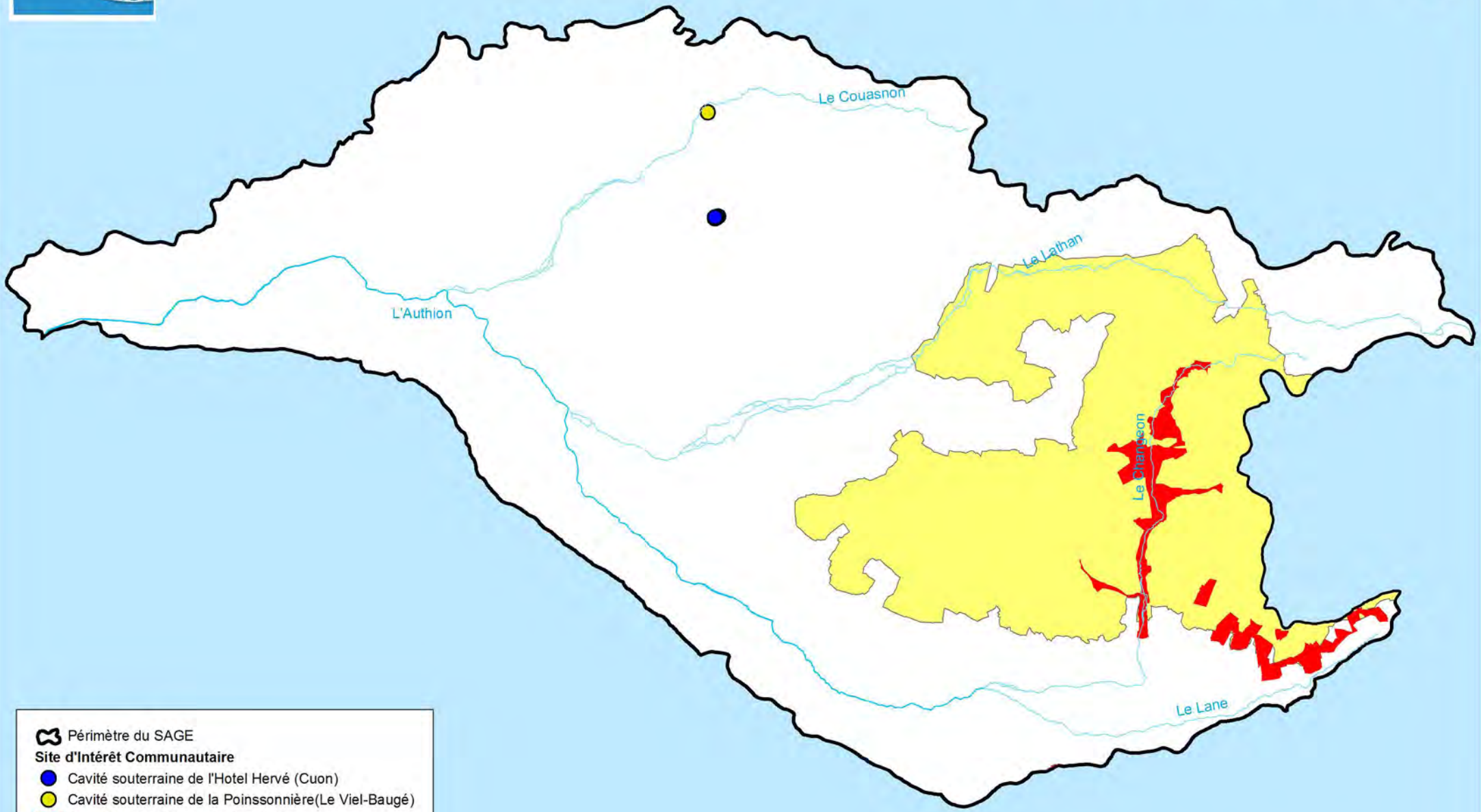



-  Périmètre du SAGE
-  Zone Naturelle d'Intérêt Ecologique Floristique et Faunistique (ZNIEFF) de type 2
-  Zone Naturelle d'Intérêt Ecologique Floristique et Faunistique (ZNIEFF) de type 1
-  Zone d'Intérêt Communautaire pour les Oiseaux








 Périmètre du SAGE

**Site d'Intérêt Communautaire**

 Cavité souterraine de l'Hotel Hervé (Cuon)

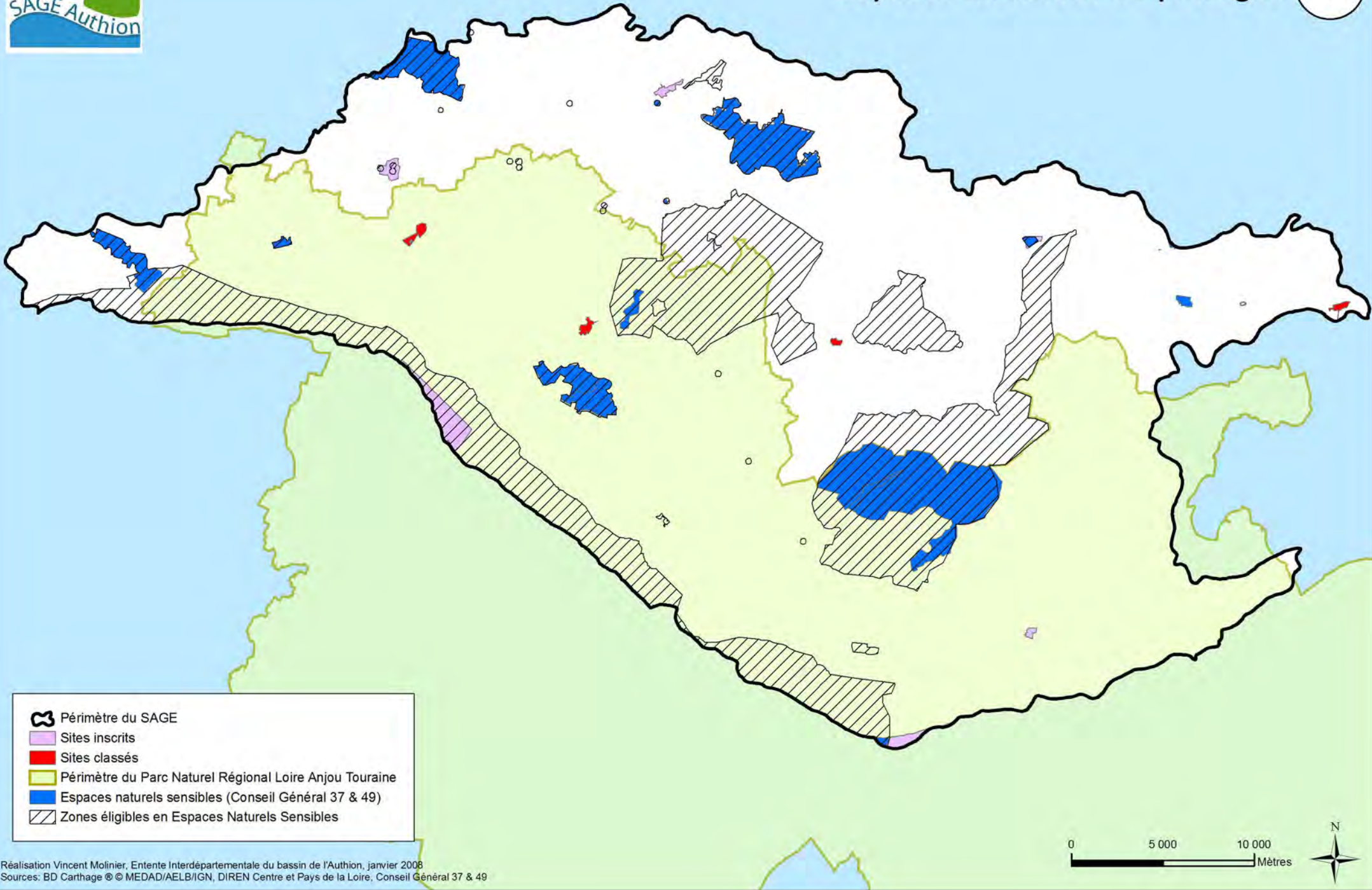
 Cavité souterraine de la Poinssonnière (Le Viel-Baugé)

 Complexe du Changeon et de la Roumer




 ZPS Lac de Rillé et forêts avoisinantes

0 5 000 10 000 Mètres





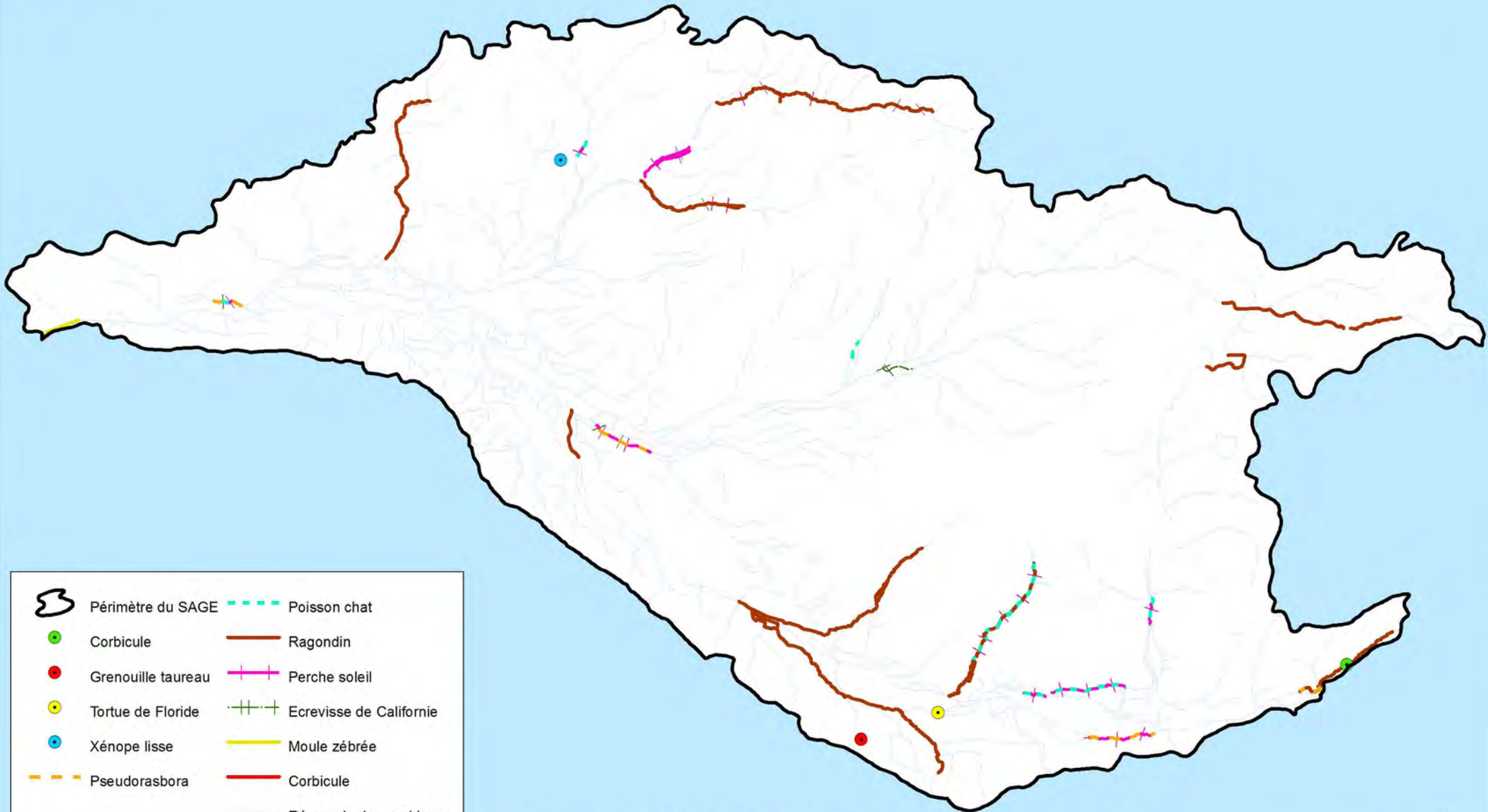


-  Périmètre du SAGE
- Espèces exotiques envahissantes**
-  Non inventorié
-  Cours d'eau inventorié

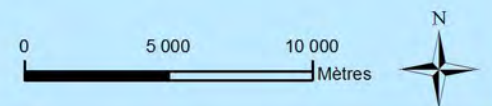
Inventaires en date de septembre 2007

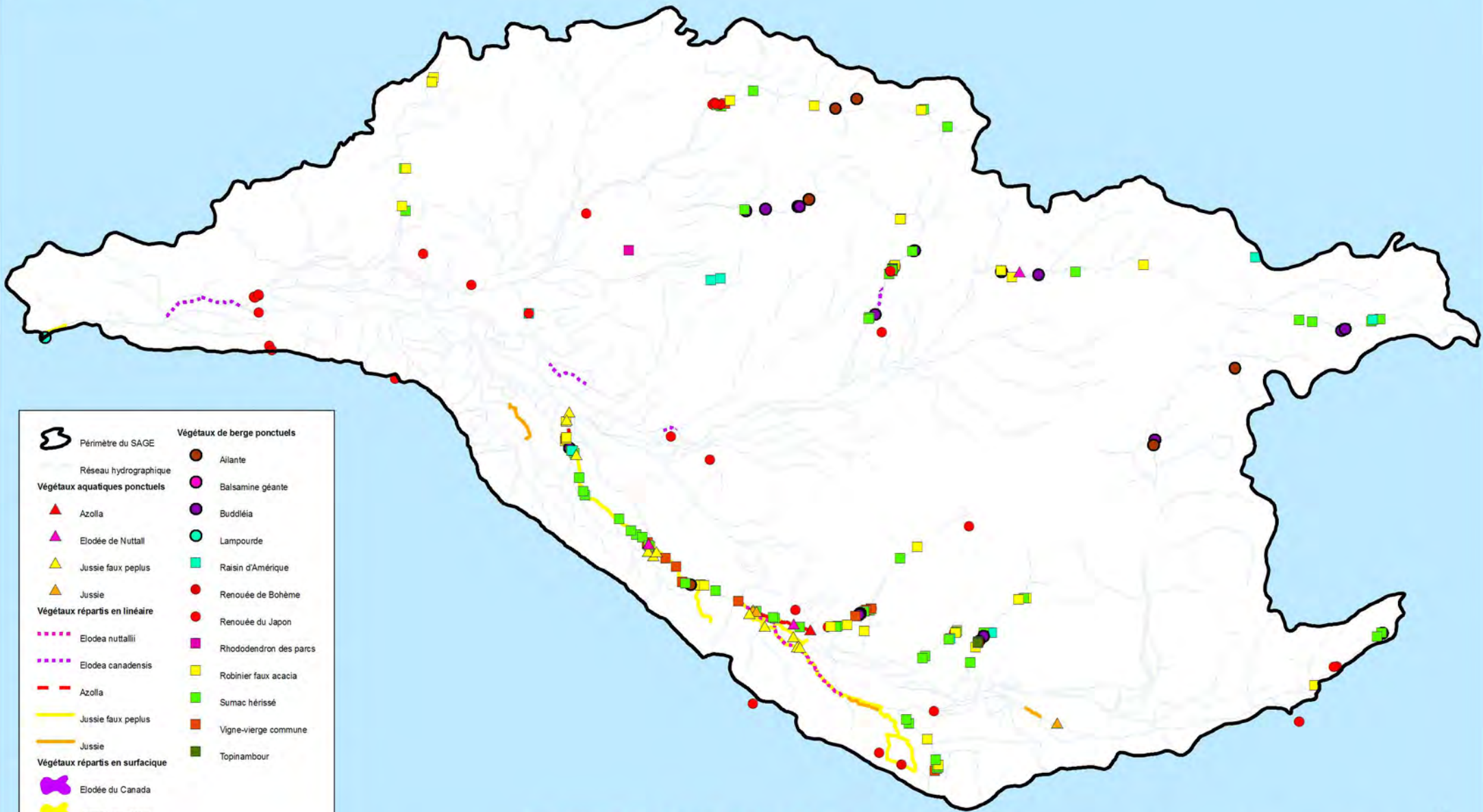
0 5 000 10 000 Mètres



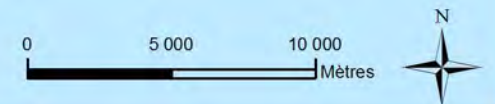


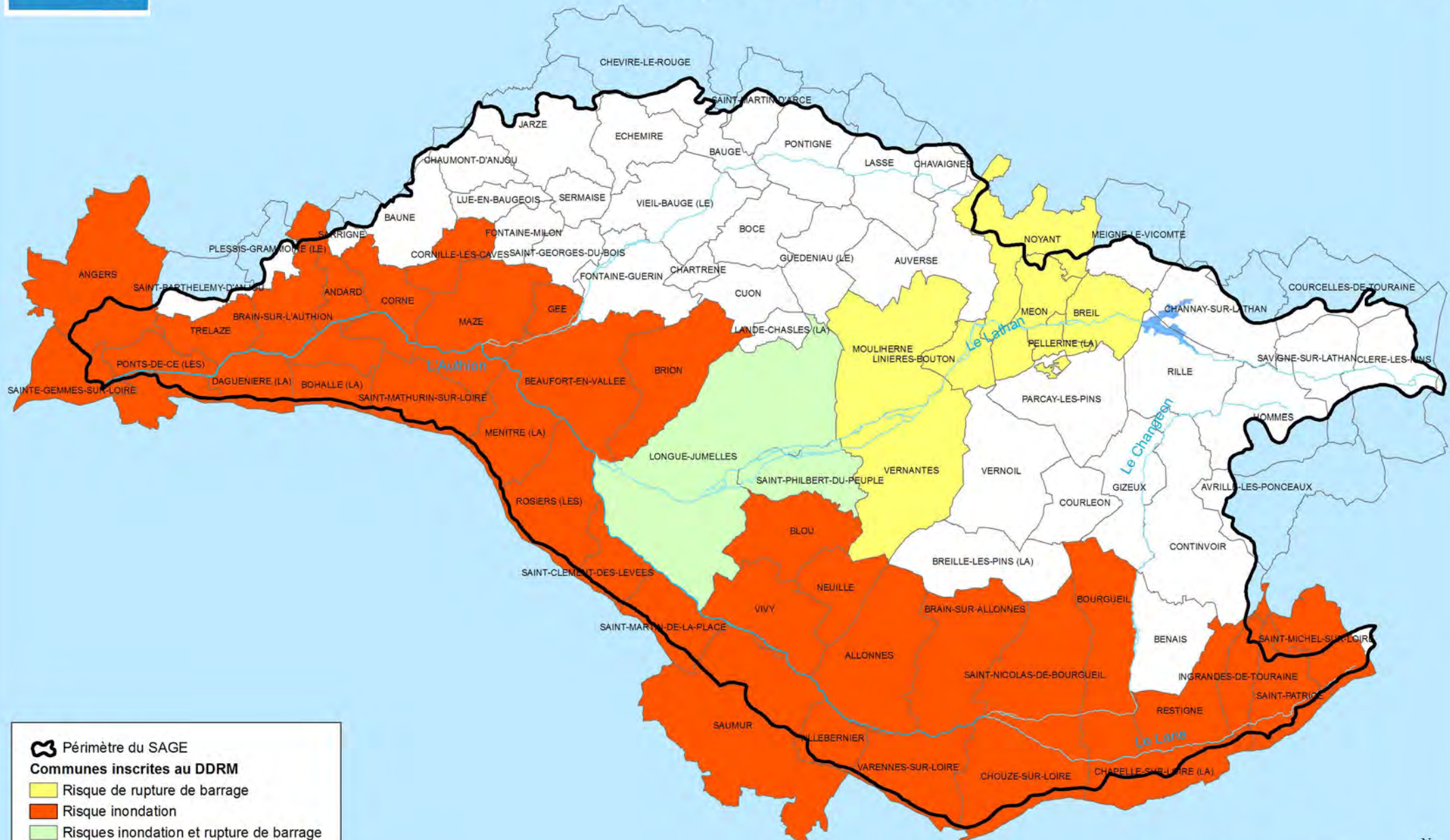
Inventaires en date de septembre 2007






Inventaires en date de septembre 2007







 Périmètre du SAGE

**Communes inscrites au DDRM**

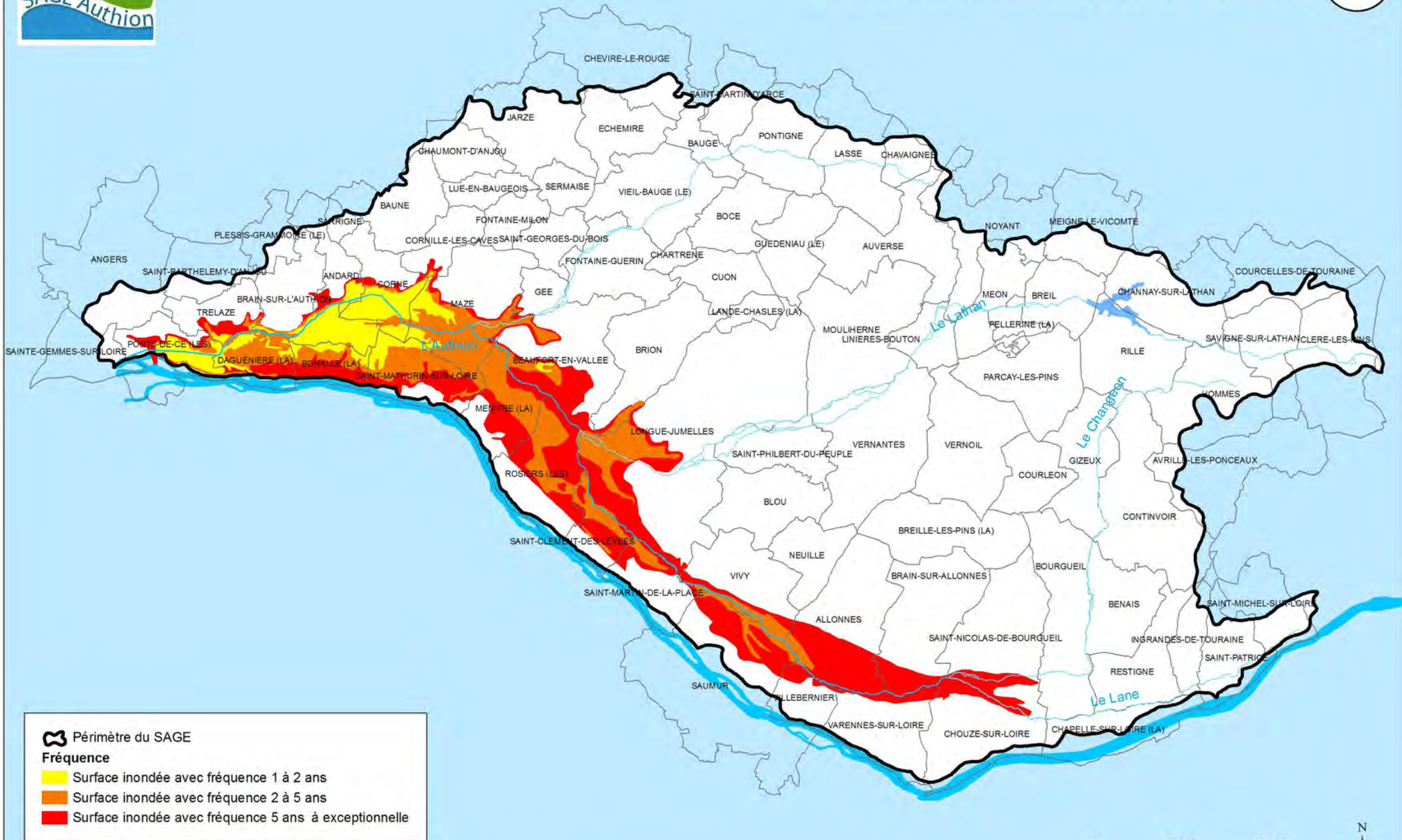
 Risque de rupture de barrage

 Risque inondation

 Risques inondation et rupture de barrage







0 5 000 10 000  
Mètres

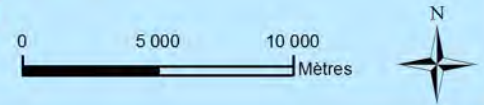




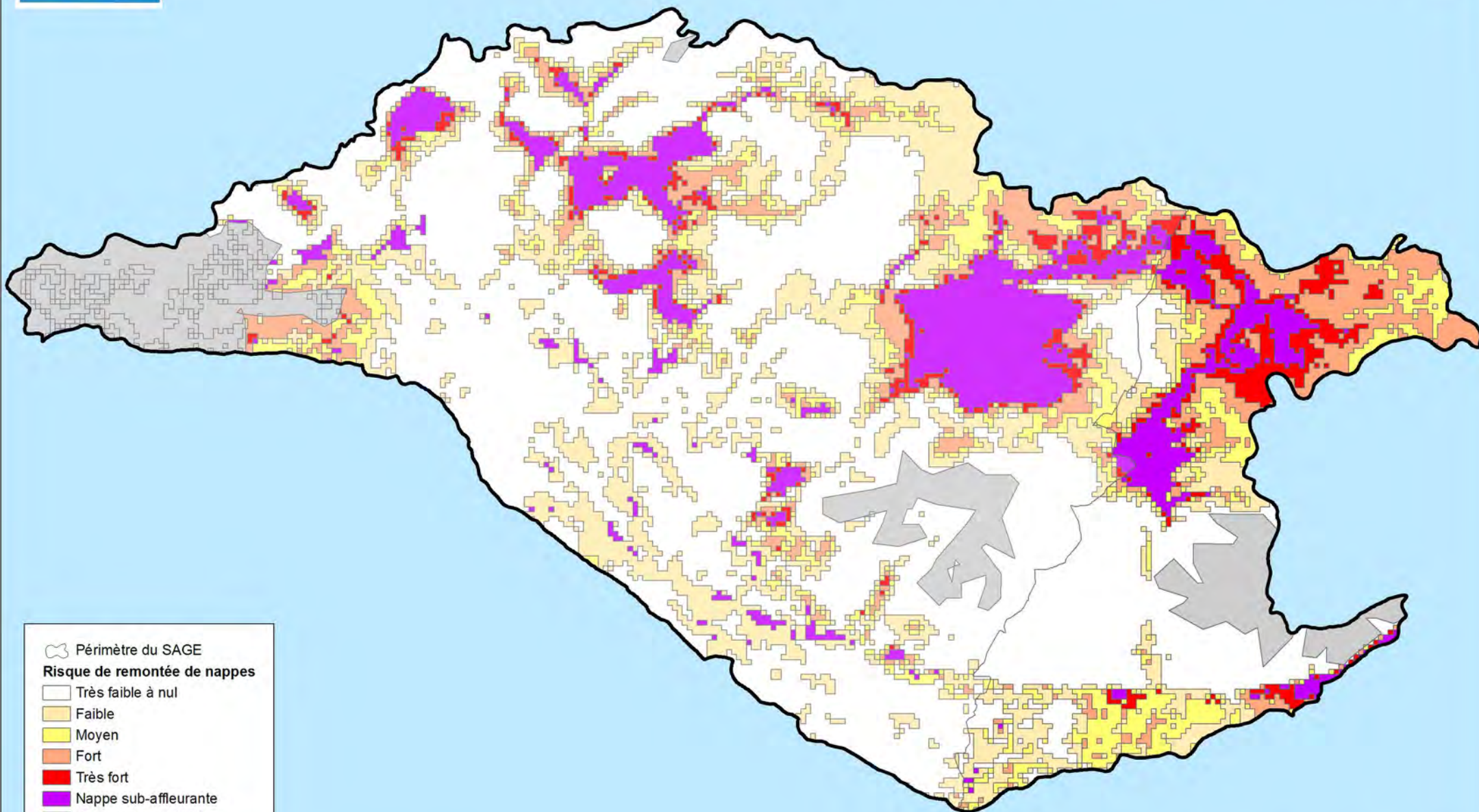




 Périètre du SAGE  
 Plus Hautes Eaux Connues par la Loire  
**Aléas d'inondation**  
 Faible  
 Moyen  
 Fort  
 Très fort







⬡ Périmètre du SAGE

### Risque de remontée de nappes

□ Très faible à nul

□ Faible

□ Moyen

□ Fort

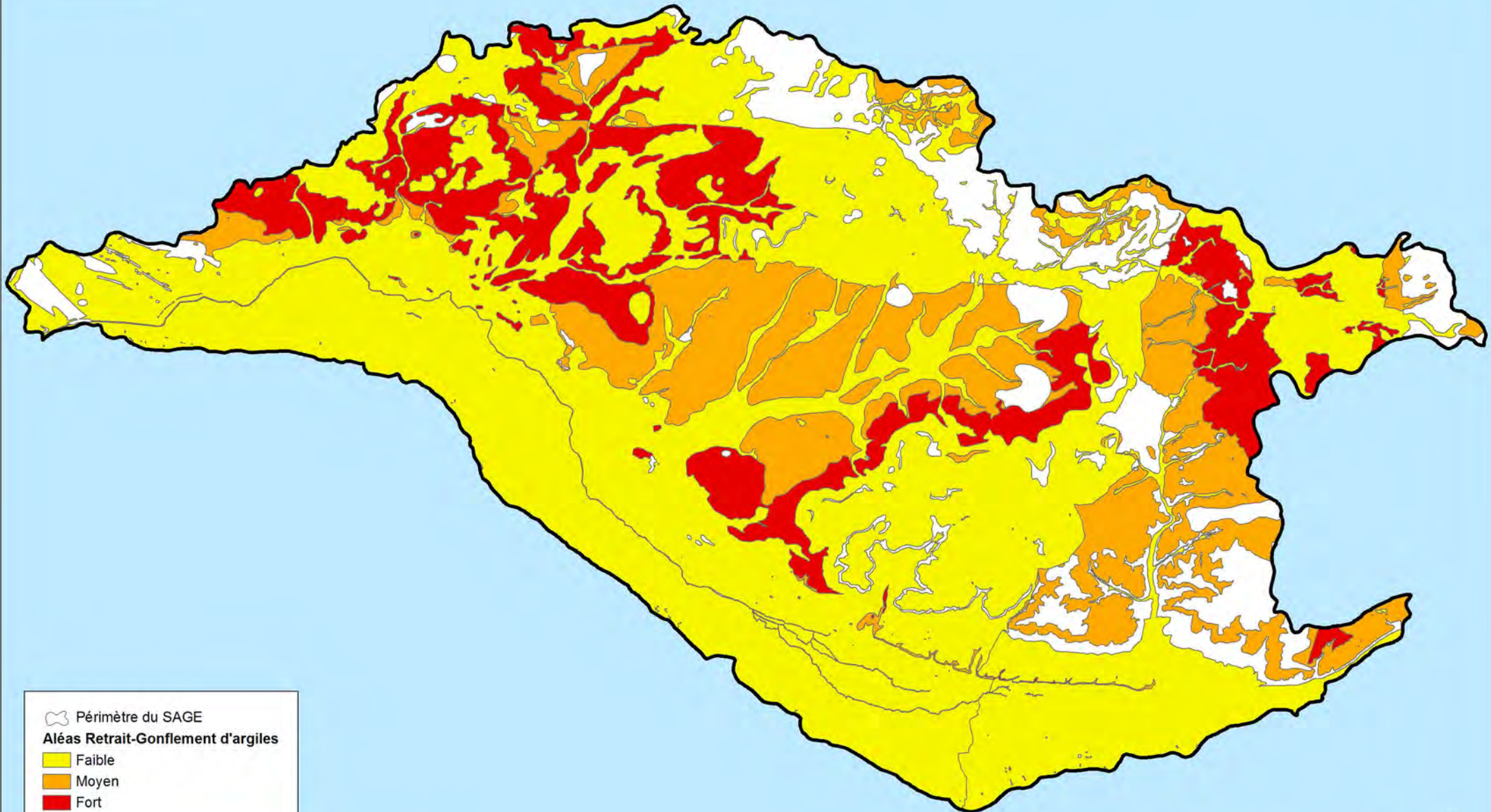
□ Très fort


□ Nappe sub-affleurante

□ Zone non renseignée

0 5 000 10 000  
Mètres





 Périmètre du SAGE

**Aléas Retrait-Gonflement d'argiles**

 Faible

 Moyen

 Fort

0 5 000 10 000  
Mètres

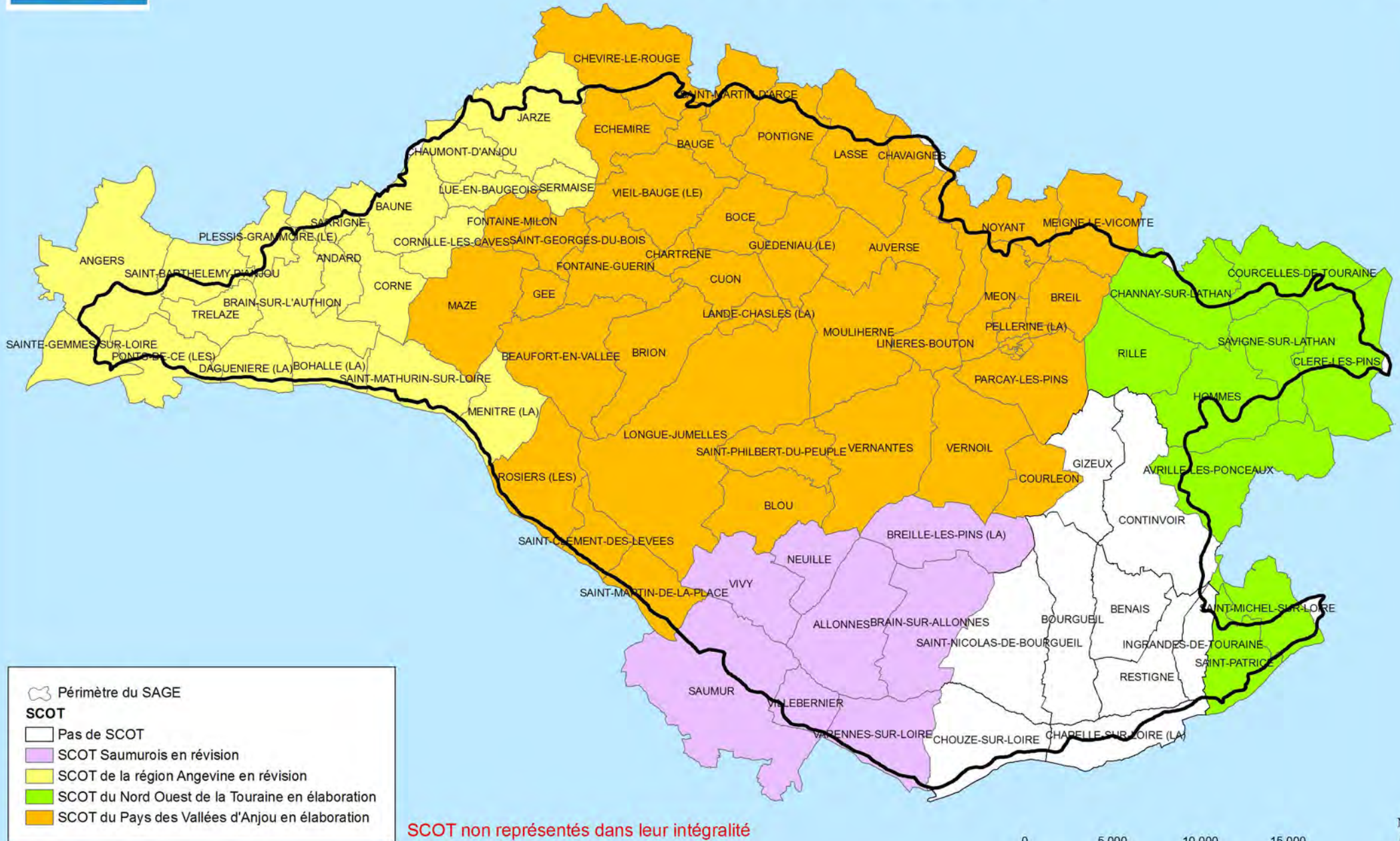


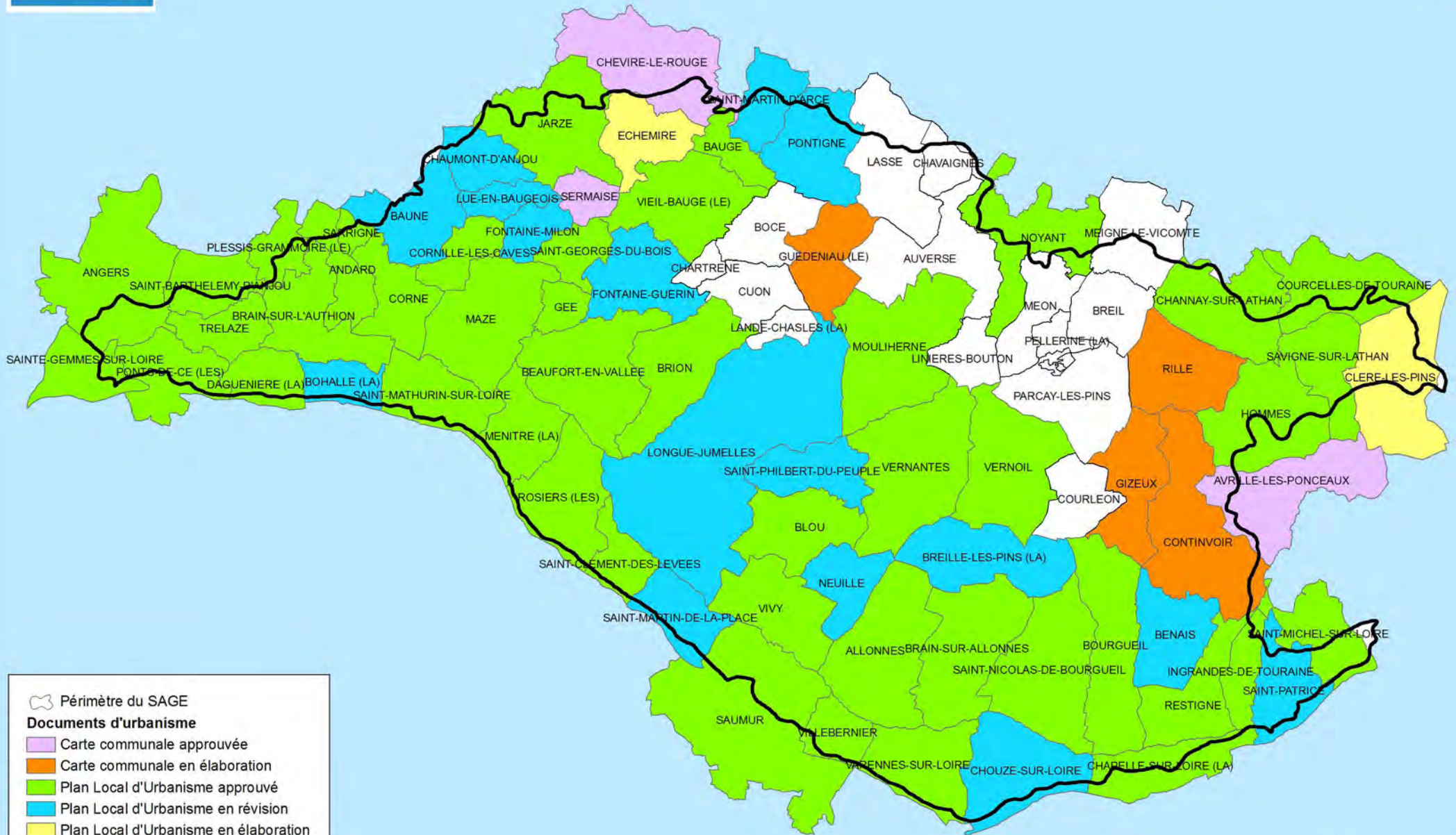


**NB: Représentation des périmètres des collectivités à l'échelle des communes du SAGE uniquement**





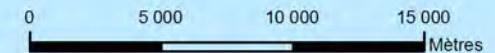




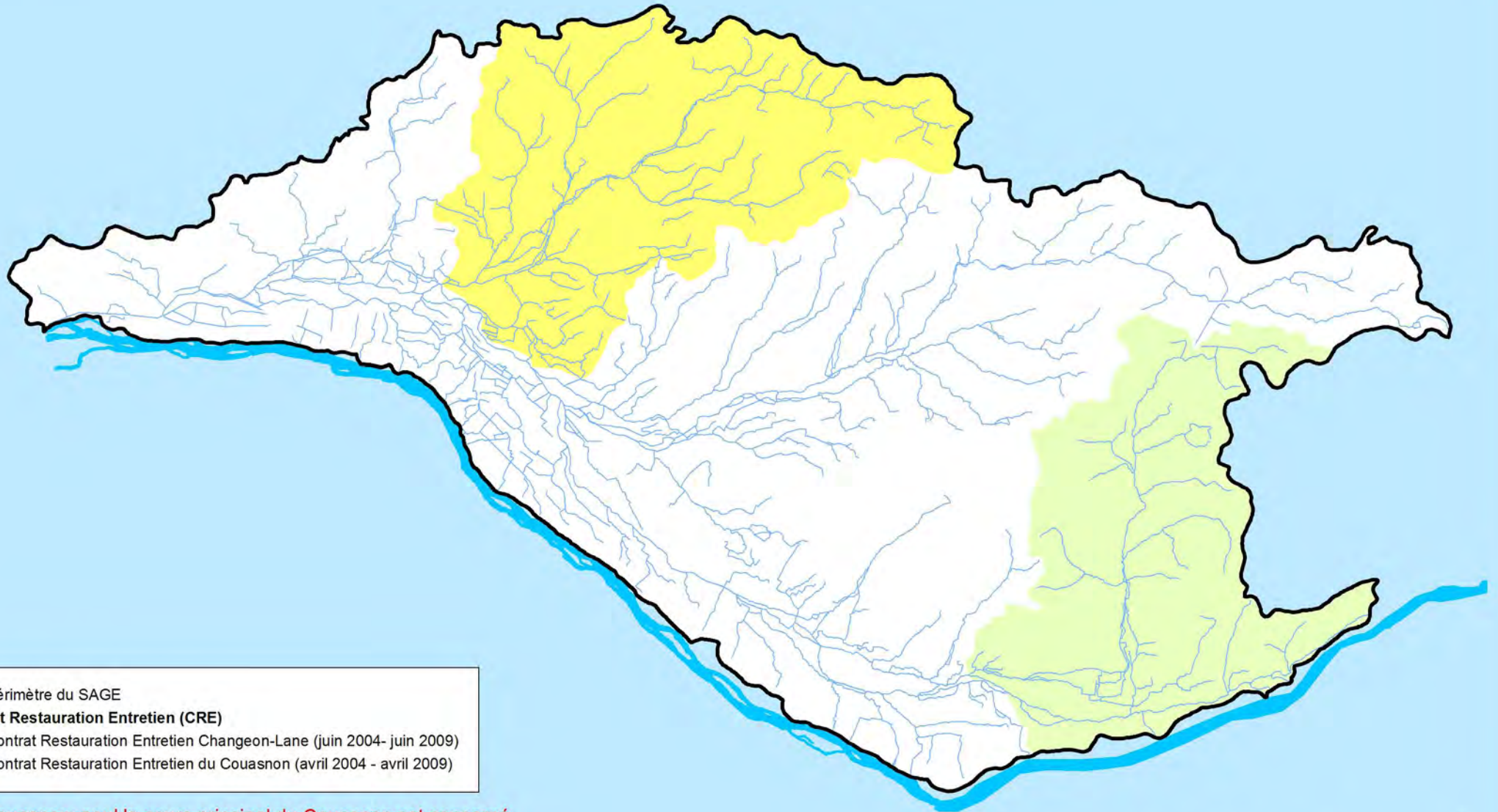
⬭ Périimètre du SAGE


**Documents d'urbanisme**

- Carte communale approuvée
- Carte communale en élaboration
- Plan Local d'Urbanisme approuvé
- Plan Local d'Urbanisme en révision
- Plan Local d'Urbanisme en élaboration
- Pas de document local d'urbanisme








 Périmètre du SAGE




**Contrat Restauration Entretien (CRE)**

 Contrat Restauration Entretien Changeon-Lane (juin 2004- juin 2009)

 Contrat Restauration Entretien du Couasnon (avril 2004 - avril 2009)

**CRE Couasnon: seul le cours principal du Couasnon est concerné**



-  Périmètre du SAGE
-  Cours d'eau domanial, domaine public fluvial
-  Cours d'eau non domanial, domaine privé

