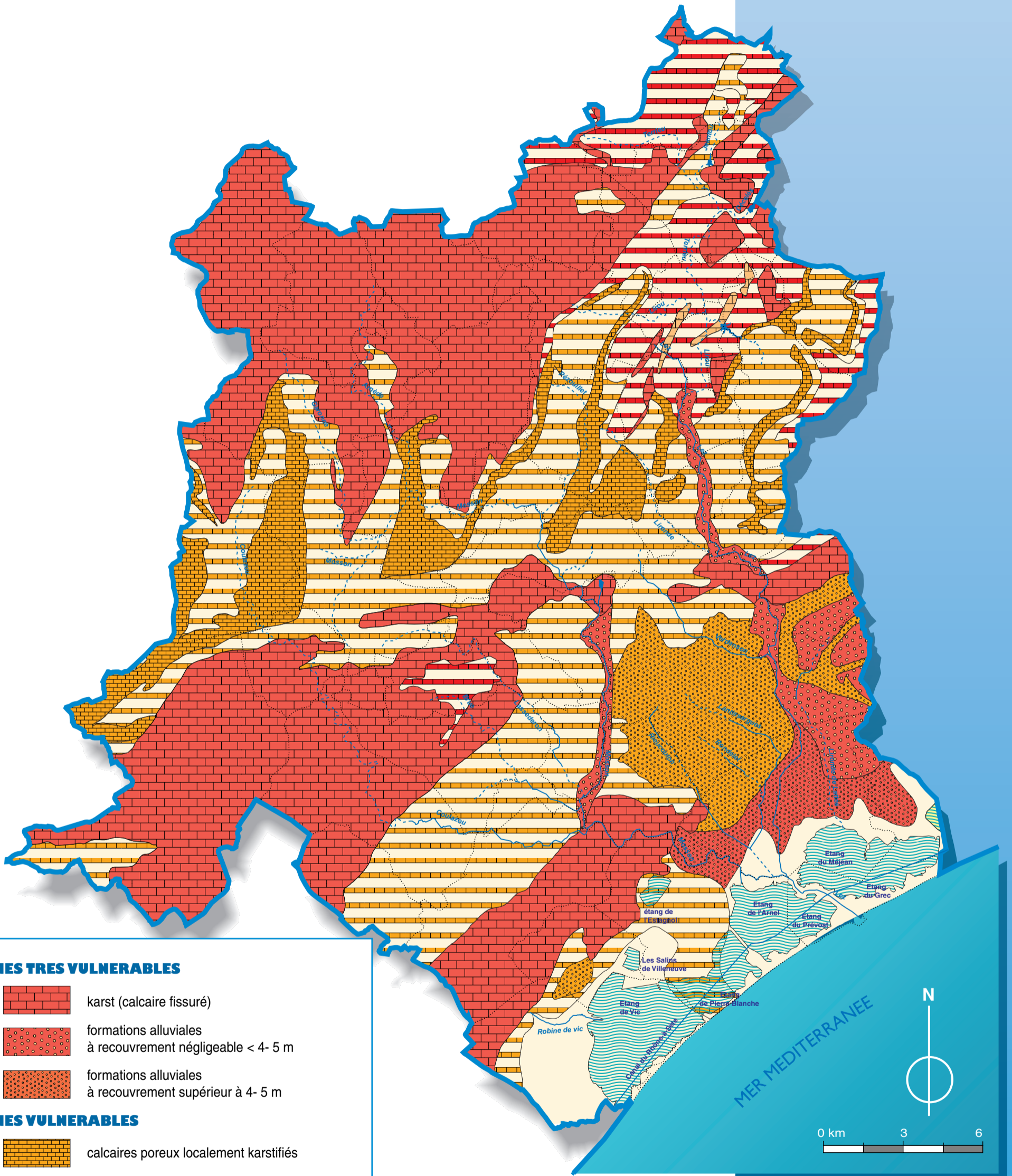
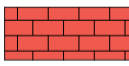






VULNERABILITE DES EAUX SOUTERRAINES A LA POLLUTION




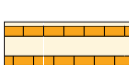
ZONES TRES VULNERABLES

-  karst (calcaire fissuré)
-  formations alluviales à recouvrement négligeable < 4- 5 m
-  formations alluviales à recouvrement supérieur à 4- 5 m


ZONES VULNERABLES

-  calcaires poreux localement karstifiés
-  sables astiens

ZONES A VULNERABILITE VARIABLE

-  alternance de marnes et de terrains perméables (grès, calcaires,...)
-  zone essentiellement marneuse, avec cependant des intercalations de terrains perméables (grès, calcaires...)

ZONES PEU VULNERABLES

-  limons et vases

Sources ; B.R.G.M. / Conseil Général de l'Hérault

Conception : Commission Locale de l'Eau / Anne Roux
Réalisation : SIEE / Dom - 1999