

# SAGE, a tool for local water management

on January 1<sup>st</sup> 2017

## The SAGE reconciles ...



**DIFFERENT USES**  
(drinking water, industry, agriculture...)



**PROTECTION OF AQUATIC ENVIRONMENTS**



**SPECIFICITY OF THE TERRITORY**

## The role of the SAGE

The **Schéma d'aménagement et de gestion de l'eau (SAGE)** is a local planning tool, established by the 1992 Act, for the balanced and sustainable management of water resources.

## The development of a SAGE

The SAGE is developed collectively by the water actors of the territory grouped together in a deliberative assembly, the **Local Water Commission** (Commission Locale de l'Eau, CLE).

**182**

**Number of SAGE in France (January 2017)**

**51**

**Average number of people in a CLE in 2017**

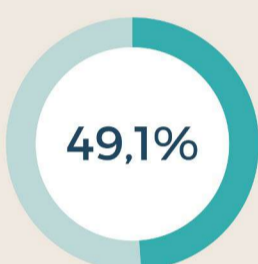
## SAGE approval

This step involves the concrete implementation of the SAGE, through the orientations and provisions it contains.

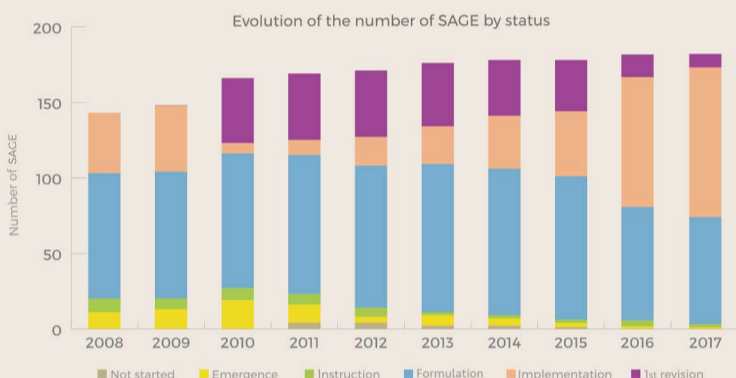
SAGE approved by prefect order

**30% in 2010 vs 59% in 2017**

## An increase in the number of SAGE in France



**OF THE TERRITORY COVERED BY A SAGE IN 2017**



## The steps in the life of a SAGE

### NOT STARTED

- The State services identify the hydrographic units likely to be covered by a SAGE.

### EMERGENCE

- A preliminary file relating to the SAGE is made ;
- The basin committee and the prefect assess the relevance of the project.



### INSTRUCTION

- The perimeter boundary order is signed ;
- Some reflections about the CLE composition start.

### FORMULATION

- The creation of the CLE is signed ;
- The drafting of SAGE documents begins : they are subject to a consultation and a public inquiry ;
- The documents are validated by the CLE.



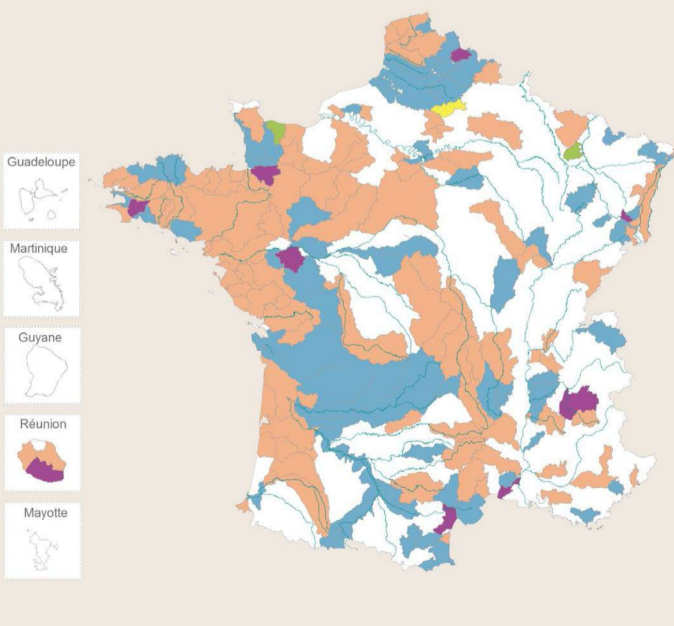
### IMPLEMENTATION

- The approval order is signed ;
- The concrete actions implementation begins on the field.

### REVISION

- The SAGE may be updated to conform with the provisions of a new law or for accounting with a new SDAGE ;
- The SAGE approval order is revised and signed : it continues its "implementation"

## Half of the French territory covered by the SAGE



### Number of SAGE

- Not started : 0
- Emergence : 1
- Instruction : 2
- Formulation : 71
- Implementation : 99
- 1st revision : 9

**1830 km<sup>2</sup>**  
Average area of a SAGE

The objective is not to cover the entire territory, but to locally use a SAGE when water conditions and pressures on aquatic environments (pollution, water withdrawals, morphological degradation) justify it.

### TO KNOW MORE ABOUT

<http://www.gesteau.fr>  
<http://www.gesteau.eaufrance.fr>

Source of data : Gesteau (International Office for Water, according to SAGE coordinator and Ministry of Environment) from datas on January 1<sup>st</sup> 2017  
Infography produced by the "International Office for Water" with the financial support of the French Agency for Biodiversity